

EHES Working Paper | No. 250 | January 2024

Revealing the Diversity and Complexity Behind  
Long-term Income Inequality in Latin America,  
1920-2011

Pablo Astorga,  
Institut Barcelona d'Estudis Internacionals (IBEI)

# EHES Working Paper | No. 250 | January 2024

## Revealing the Diversity and Complexity Behind Long-term Income Inequality in Latin America, 1920-2011\*

Pablo Astorga<sup>1</sup>,  
Institut Barcelona d'Estudis Internacionals (IBEI)

*Forthcoming in Journal of Economic History. 2024, 84(4)*

### Abstract

This paper analyses and documents new long-term income inequality series for Argentina, Brazil, Chile, Colombia, Mexico and Venezuela based on dynamic social tables with four occupational groups. This enables the calculation of comparable Overall (4 groups) and Labor Ginis (3 groups) with their between- and within-groups components. The main findings are: the absence of a unique inequality pattern over time; country outcomes characterized by trajectory diversity and level divergence during industrialization, and by commonality and convergence post 1980; the occurrence of inequality-levelling episodes with different timing and length; and significant changes in trends, but also evidence indicating persistence.

JEL Codes: O10, N1, O15, O54

Keywords: economic development, industrialisation, income inequality, Latin America

<sup>1</sup>**Corresponding Author:** Pablo Astorga ([pastorga@ibei.org](mailto:pastorga@ibei.org))

\* This work is dedicated to Rosemary Thorp and Valpy FitzGerald whose outstanding contributions to the study of economic and social development in Latin America have been a constant source of learning and inspiration. I am grateful to Facundo Alvaredo, Leticia Arroyo Abbad, Luis Bértola, Diego Castañeda Garza, Valpy FitzGerald, Ignacio Flores, Ewout Frankema, Eduardo Martín Cuesta, María Gómez León, Nadine Kazerounian, Peter Lindert, Leonardo Maldonado, Branco Milanovic, Marc Morgan, Leandro Prados de la Escosura, Eustáquio Reis, Javier Rodríguez Weber, Pedro Souza, Hector Valecillos, Leonardo Weller, Henry Willebald and Jeffrey Williamson for their generous help. The paper benefited greatly from comments by Eric Hilt (Co-Editor) and two anonymous referees. Erick Polin Castañeda provided effective research assistance during the last stage of this work. This research has received financial support from the project PGC2018-095821-B-I00: (MCIU/AEI/FEDER, UE).

### Notice

The material presented in the EHES Working Paper Series is property of the author(s) and should be quoted as such. The views expressed in this Paper are those of the author(s) and do not necessarily represent the views of the EHES or its members

## INTRODUCTION

The study of income inequality in Latin America after c.1870 can be divided into three epochs defined by particular growth and development strategies: the First Globalization and commodity-export-led growth (1870-1919); the transition decade of the 1920s and state-led protected industrialization (1920-1979); and a new episode of integration into the global economy and export-led growth (post 1980). A common thread across the epochs is the debate about the relative importance of persistence and change in shaping countries' inequality, in other words between high and stable levels versus fluctuations and changing trajectories. One view stresses the legacy of colonial institutions via high land concentration and a delayed access to education and political rights (Engerman & Sokoloff 2000; De Ferranti et al. 2004). Whereas, the other view centers on the role played by strategies and economic and social transformations (Williamson 2010; Arroyo and Astorga 2017).

A common institutional past and largely shared strategies and structural transformations have given currency to a widely-held assumption that Latin America is homogeneous in terms of its inequality. But is country commonality in outcomes supported by the evidence? Finding an answer has proved elusive because of limited data comparability as well as a reduced coverage of countries prior to c.1980. Although the start of the period of export-led growth coincides with the implementation of increasingly comparable official household budget surveys (HBS) covering a large majority of countries, the underestimation of income at the top of the distribution (in particular property income) is a data deficiency common to all three epochs.

This paper contributes to our understanding of the evolution of income inequality in Latin America by offering yearly pre-fisc Ginis from 1920 to 2011 in Argentina, Brazil, Chile, Colombia, Mexico and Venezuela (LA6). The methodology used guarantees the comparability of inequality outcomes over time and across countries informing about commonality and diversity in levels and changes. The estimation work largely relies on wage data, but also makes allowances for property income to construct a set of measures based on dynamic social tables with four occupational groups defined by their level of skills. The

top group (employers, managers and professionals) concentrates property income, whereas labor income dominates occupations in the lower three groups (for example, clerks, masons, and laborers). Importantly, this breakdown facilitates the measurement of the income share of high earners; and, more generally, unveils patterns at different layers of the occupational structure.

In addition to the homogeneity issue, I address three more specific questions in the light of new evidence: Are the state-led protected industrialization (SLPI) and the export-led growth (XLG) epochs also distinct in terms of their inequality outcomes? Were there lasting levelling episodes comparable to those experienced by the US and the UK in the middle decades of the last century? Is there evidence of persistence in country trajectories?<sup>1</sup>

During the period under analysis Latin America underwent profound structural, demographic and institutional transformations with significant distributional implications, which are the focus of attention of the main inequality narratives.<sup>2</sup> The general picture of the region around 1920 was one of largely rural societies, poorly educated, with an incipient development of manufacturing, with economies relatively open to international trade and dependent on the export of a handful of raw materials,<sup>3</sup> and low rates of population growth as well as low participation rates. In response to the external shocks brought about by the Great Depression and the Second World War, many countries in the region underwent major economic adjustments and revised their growth strategies, favoring the promotion of domestic manufacturing. This spearheaded an explicit strategy of import-substituting industrialization led by the state that dominated economic policy until the 1970s. This was

---

<sup>1</sup> This paper builds on Astorga (2017b) covering 1900-2011 in the LA6 and Arroyo & Astorga (2017) covering 1860-2011 with Brazil excluded before 1900. Although the methodology and motivation of the inquiry remain the same, there is a more comprehensive and accurate estimation of income inequality post 1920 by including within-group inequality and by using Household Income rather than National Income to capture total income. Also, it uses a revised wage dataset (Astorga 2023) and includes a full documentation of the estimation work. A related work (Astorga 2024) offers income shares of the top 10%, middle 50%, and bottom 40% of the labor force.

<sup>2</sup> Structural change (Kuznets 1955, Lewis 1954), institutional and political changes (Piketty 2014), the ins-and-outs of the global economy (Heckscher-Ohlin model), and education and technology (Tinbergen 1975).

<sup>3</sup> Although, during the 1920s customs duties were introduced to promote incipient industries in the larger economies, tariffs were primarily intended to raise revenue (Coatsworth & Williamson 2002).

accompanied by rapid urbanization and internal migration,<sup>4</sup> institutional changes in the labor market (for example, official minimum wage, collective bargaining and unionization) and fiscal policy (direct taxation), mass education, high population growth, and economic modernization and diversification.

As the structural change got underway and labor moved from low to higher productivity sectors, it was expected – according to the Kuznets-Lewis logic – that the urban labor force would improve their educational levels and skills, while the fall in the rural workforce and the modernization of agriculture would bid up their wages. However, there is a well-known twist to this process in Latin America. Industrialization stagnated in the final quarter of the last century and the workforce growth swelled the urban informal sector creating the conditions for worsening inequality (Thorp 1998). The middle decades also witnessed the surge of authoritarian rule, with important political-economy implications for inequality. For instance, the right-wing military regimes in Argentina (1976-1983), Brazil (1964-1985) and Chile (1973-1990) effectively undermined or banned trade unions, increased flexibility in the labor market, and restricted minimum wages as part of their reform agenda (Morley 2000).

The SLPI epoch was followed by the 1982 Debt Crisis, and the introduction of neoliberal reforms in the 1980s (mid-1970s in Chile) and the 1990s. This brought about a shift from relatively closed, state-dominated economies, to ones more open and market oriented. It was thought that, consistent with standard trade theory, more competition from imports and a rise in low-skill exports would help to reduce income inequality. But, in practice, trade liberalization primarily encouraged the expansion of relatively skill-intensive export activities, which in a context of skills shortages, pushed up premiums (Stallings and Peres 2000) and translated into rising inequality up to the end of the century (Székely and Sámano 2012). In addition, the delayed impact of the demographic transition on the labor market together with increased female participation rates (Camou and Maubrigades 2016) boosted the supply of

---

<sup>4</sup> Argentina and Chile already had significant urban populations by 1920, Brazil, Colombia, Mexico and Venezuela had to wait until the 1940s and early 1950s for the turning point in urbanization. By 1980 75% of the LA6 population lived in cities, compared to only 20% in 1920 (Astorga et al. 2005).

unskilled workers and undermined their wages. The effects of these underlying trends were compounded by a wave of deregulation and privatizations that shifted formal employment to an already large informal sector, exacerbating inequality.

The new century ushered in the China-led commodity boom (2003-2013) that supported employment creation and higher wages, particularly of unskilled workers (De la Torre et al. 2012). The boom eluded Mexico, where exports were mostly manufactures to the US. Also, governments across the region – predominantly left-wing – implemented more progressive social spending, adopted educational reforms and favored pro-labor policies (Roberts 2012). The result was a largely shared fall in income inequality across the region as reported by HBS. However, by the end of the 2010s inequality levels remained relatively high, both compared to historical values and to other global regions (Amarante and Colacce 2018).

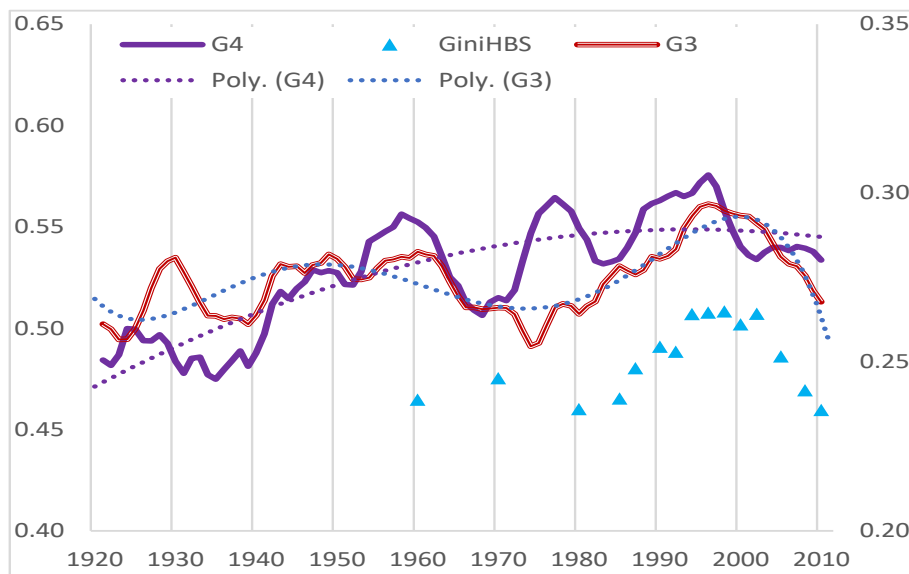
#### WHAT INEQUALITY REGIONAL PATTERN TO EXPECT BETWEEN 1920 AND 2011?

There are two contrasting answers. Ferranti et al. (2004) adopting the institutionalist view suggest that Latin America had already very high levels of inequality by 1920 and that the scant evidence available indicates persistence during the rest of the century despite social and economic transformations. This is also consistent with country commonality. By contrast, Frankema (2009) proposes a different pattern. First, a rising trend from 1870 until the Great War with more open economies and an institutional context favoring landlords and capital owners. Then, a trend reversal during the interwar years and a fall in inequality until the mid-1970s to early 1980s, supported by a prominent role of the state and income policies tailored to urban workers. This was followed by a marked widening of inequality driven by skill-biased technological change, in conjunction with the erosion of labor market institutions and increased global competition. Graphically, this conjecture results in a sinusoidal wave with an inequality peak in the 1920s and a trough around 1980. A similar pattern is proposed by FitzGerald (2008) and Ocampo (2013).

Do the data conform to the predictions? To answer this, I rely on my two main inequality measures: the “Overall Gini” ( $G_4$ ) which is based on a categorization of all workers into four

occupational groups, and the narrower “Labor Gini” (G3) focusing on the lower three wage-based groups. Figure 1 shows the average LA6 trajectories of both Ginis with their respective polynomial trendlines to capture secular trends, together with the standard Gini coefficient based on household budget surveys. Significant differences between my Ginis, in both levels and trajectories, are explained by the determinant role played by the top group’s income share in shaping the inequality outcome.

FIGURE 1: AVERAGE INEQUALITY TRAJECTORIES IN THE LA6



Notes: *G4* and *G3* are 3-year moving simple averages; *G3* is plotted on the right axis. *GiniHBS* = Ginis based on household budget surveys. Sources: see Figure 5.

This aggregate evidence shows there is no simple answer. Generally, fluctuations prevail over constancy. The *G3* trajectory is broadly consistent with Frankema’s conjecture post 1920; and, after 1970, it aligns with the evolution of inequality according to the HBS which largely excludes top incomes – hence its lower level relative to *G4*. However, the more encompassing *G4* shows a rising secular trend since 1920 (amid significant fluctuations) levelling off in the 1990s. Thus, conformity to the predicted inequality pattern largely depends on the exclusion of high-earners’ income. But, how well do average trajectories represent country stories? To address this question, I present the disaggregated evidence by country and discuss commonality and diversity in the section Inequality Evidence, after the explanation of the methodology. Next, I summarize the main findings of the paper.

The study of the occupational Ginis reveals that altogether, despite common historical roots and structural and institutional similarities, there is no uniform inequality pattern, either across countries or within the occupational structure. The picture that emerges is one of inequality stories that are not the same for the whole region.

Trajectories of the Overall and the Labor Ginis tend to differ, making conclusions largely contingent on the measure used. The two developmental epochs are distinct in terms of their inequality outcome, with contrasting patterns in both *G4* and *G3*: whilst XLG is dominated by commonality, SLPI is characterized by diversity with a number of levelling episodes of different timing and extension. But, unlike the US and the UK, the region did not experience a widespread and sustained inequality levelling between the 1940s to the 1970s.

Moreover, throughout the period of analysis there is evidence of both persistence and change. This indicates the combined impact of lingering effects of exclusionary institutions and sizable inequality fluctuations arising from differences in terms of factor endowments, integration in the world economy, and institutional adaptations. But country diversity is also evident when testing for persistence.

The analysis of this paper is based on three methodology innovations. First, I calculate the income accruing to the top group as a residual after deducting the estimated income of the lower wage-based groups from total income. This makes it possible to capture property income during a period where tax micro data, when available, are of limited use because of widespread tax evasion and avoidance. Secondly, I use a Normal distribution - supported by the outcome of normality tests - to estimate within-group inequality in each of the lower three groups. And, thirdly, I adopt a procedure to calculate inequality within the top group using, when possible, estimated income shares of the top quantiles (for example, 1% and 5%) under the assumption of a Pareto distribution. The last two innovations enable me to calculate the within inequality component of occupational groups with distinct distributional patterns reflecting different probability functions.



## MAIN EMPIRICAL STRANDS IN THE LITERATURE

Broadly speaking, the empirical literature on income inequality in Latin America can be divided into four strands. The first, social tables, is the most comprehensive approach to measure income inequality in periods where household income surveys and tax records are limited. This method combines detailed data of benchmark years from population censuses with income data from other sources (Milanovic et al. 2010, Allen 2019). There are also dynamic social tables, where annual income data (usually wages) fill the gap between benchmark years. There have been important efforts in constructing social tables in the last two decades or so. For instance, Castañeda and Bengtsson (2020) on Mexico, and, on the dynamic variety, Gómez León (2021) on Brazil, Rodríguez Weber (2014) on Chile, Rodríguez Weber (2017 – based on Londoño, 1995) on Colombia, and Bértola (2005) on Uruguay. These works offer valuable insights, primarily on inequality levels at benchmark years and, depending on the case, on trends. Also, they pay special attention to the inclusion of property income where the data allows. However, they are of limited comparability across countries, either because of methodology differences and/or temporal span, and, therefore, cannot offer a regional perspective on inequality.

A second strand puts more emphasis on a multi-country scope, the main evidence coming from labor income, and wages in particular. For instance, Frankema (2010) offers labor income shares in Argentina, Brazil, and Mexico during the 20th century, as does Astorga (2017a) on those three countries plus Chile, Colombia, and Venezuela from 1900 to 2011. Elsewhere, Frankema (2012) examines long-run industrial wage inequality in Argentina, Brazil, and Chile and concludes that aggregate inequality indicators reveal little about the changing determinants of inequality, when the latter affect such indicators in opposite directions. And, therefore, it is necessary to include partial inequality metrics (for example, wage inequality and skill premiums) to help isolate the contributions of changing economic circumstances or political-institutional reforms. This finding is of particular relevance to my work.

The third empirical strand relies on household budget surveys to calculate personal or household income inequality since the 1980s. One important advantage of this strand is that it offers comparable inequality metrics across countries based on perfectly-sorted incomes over the whole distribution. However, one well known limitation of the surveys is the underestimation of top incomes, particularly non-labor income (Szekely and Hilgert 1999). There are earlier estimates for a handful of countries but they are sparse in time and not fully comparable across countries or across time (see Oscar Altimir estimates in Thorp 1998, Statistical Appendix). Prados de la Escosura (2007) quantifies income inequality trends by complementing HBS Ginis with ratios of per-capita GDP to unskilled wages – or Williamson ratios – in seven countries since the second half the 19<sup>th</sup> century. But his series are of limited use to capture inequality developments post 1920. Also, work by Gazeley et al. (2018) on historical household budget surveys in Latin America 1913-1970 combines official and non-official sources. They found a modest average increase in inequality in the region from the 1930s to the 1960s, but with the warning that the measured rise is due mainly to changes in survey methods and data coverage.

These shortcomings lead us to the fourth strand based on tax records. For recent decades they have been used to correct the underestimation of top incomes in the budget surveys and to produce more comprehensive income Ginis (Medeiros et al. 2015 in Brazil; Alvaredo & Londoño 2013 in Colombia). Tax records also allow the tracking of top incomes during periods without household budget surveys (Alvaredo 2010 in Argentina; Flores et al. 2019 in Chile). However, problems of tax evasion and avoidance, together with methodological breaks and long spells without data, limit the use of this approach to shed light on income concentration at the top and, especially, on inequality over the whole distribution over the long term.<sup>5</sup>

---

<sup>5</sup> Jiménez et al. (2010) estimate average income tax evasion c.2005 equivalent to 4.6% of GDP in seven Latin American countries including Argentina, Chile, and Mexico. See Alvaredo (2010) for concerns on the use of historical tax data in Argentina.

This paper belongs to the strand of dynamic social tables. Because the aim is to cover as many countries as possible during a long horizon the number of groups is reduced to four. The main reason I cannot include more groups is the need for additional continuous wage series reflecting a distinctive skill level (for example, professionals). In constructing the data, I benefited greatly from single-country social tables, in particular Rodríguez Weber (2014, 2017) and Castañeda and Bengtsson (2020), and from wage data used in Frankema's work. Equally, I draw from contributions of the tax-records strand, which made it possible to estimate income inequality of my top occupational group. See Online Appendix 3 (OA3).

From a long-term, regional perspective, it would be ideal to have comparable detailed dynamic social tables including a sufficient number of countries. In addition, such social tables should, first, contemplate a large number of groups so defined as to minimize income overlaps (approaching the perfectly-sorted quantiles of the HBS strand) and, secondly, use administrative records of high earners' income as in the tax-records strand. But, in practice, expanding coverage and extending the time span of the analysis comes at the expense of country detail and number of groups. This is the price to pay to guarantee comparability and a methodologically-consistent estimation of the income of high earners.

## DYNAMIC SOCIAL TABLES

The starting point is the construction of dynamic social tables of four occupational groups following the methodology in FitzGerald (2008). For each country, the economically active population (EAP) is divided into: Group 1 (employers, managers, and professionals), Group 2 (technicians and administrators – white-collar workers), Group 3 (semi-skilled blue-collar workers, and other urban workers in low productivity sectors such as retailing and transport), and Group 4 (urban and rural unskilled, including domestic servants). These groups are themselves an aggregation of the categories used in ECLAC's Social Panorama. To ensure consistency with the total EAP series, the labor force in Group 3 is calculated as a residual. The shares of the groups change over time in response to developments in skills formation, demography, and living standards. This is a departure from standard Ginis calculated with

fixed quantiles of the labor force. The distribution of income per occupational group in a given year is defined as:

$$(1) \sum_{i=1}^4 e_i r_i = 1,$$

where  $e_i$  is the EAP share of group  $i$ ,  $r_i$  is the ratio of the mean income of group  $i$  to the mean income for the EAP as a whole (income per person engaged), and  $e_i r_i$  equals the income share of each group ( $s_i$ ).

The measure of income per person engaged reflects, where possible, the Household Income concept of the national accounts. I am choosing this aggregate rather than National Income to avoid an overestimation of the income share of Group 1 that would result if items such as the net surplus of the public sector, and indirect and corporate taxes were included.<sup>6</sup> Although, since the 1980s, there is enough data to account for net taxes, this is not so in previous years. Nevertheless, there was limited redistribution via direct transfers in the region during most of the 20<sup>th</sup> century (Goñi et al. 2011) and the analysis of the series pre-fisc or post-fisc should lead to similar conclusions. Also, I omit the distributive impact of social spending which has risen throughout the region since around 1950, though exhibiting high volatility and following the swings in economic activity (Arroyo Abad and Lindert 2017).

The income share of Group 1 ( $s_1$ ) is calculated as a residual by subtracting those of the other three groups:

$$(2) s_1 = e_1 r_1 = \{1 - \sum_{i=2}^4 e_i r_i\}.$$

The top share is likely to capture most of property income (distributed profits, dividends, rents and interest payments) for all the economically active population, together with labor income of managers and professionals.<sup>7</sup> Because of the way it is calculated,  $s_1$  may be

---

<sup>6</sup> However, the main conclusions of the paper are robust to the change in the income concept. Whilst  $G4s$  have higher levels under National Income, trajectories tend to coincide. See Figure OA1.2 in Online Appendix 1 (OA1).

<sup>7</sup> The long-term evidence in developed economies shows that property income tends to be concentrated in the top 10% of the distribution (Piketty 2014). And, almost certainly, this is also true in Latin America owing to an historically high concentration of assets (Frankema 2009).

subject to a significant margin of error. However, when data are available, its trends are broadly consistent with those of the income share of the Gross Operating Surplus of the national accounts and with calculations of top incomes shares based on tax records (Appendix Figure A1). Natural resource rents – particularly important in Chile and Venezuela – are included to the extent that they are reflected in household income, but not when they were used to finance publicly provided services. The complement of the top-group share ( $1-s_1$ ) offers a lower-bound estimate of the labor income share.

To estimate the mean income and the income shares of the remaining three occupational groups I rely on representative wage series ( $w_2, w_3, w_4$ ) assembled to reflect differences in skills (Astorga 2017a, 2023).<sup>8</sup> Because of the use of different sources in the calculations, it is necessary to conciliate total income with the wage bill of the three lower occupational categories. See Online Appendix 1 (OA1). Also, there is a potential bias when estimating income ratios by dividing the wage series by the income per person engaged. The former reflects the income of those employed, whereas the latter takes into account the unemployed and underemployed. Thus, at times of high employment losses, my series would underestimate  $r_1$  and, in turn, inequality. This bias can be especially relevant in the early years of the Great Depression or during country-specific economic crises (for example, Chile in 1981-1983 and Argentina in the early 2000s). To minimize the potential impact of this bias, I adjust upwards my series of income per person engaged using available unemployment rates (OA1.2).

There are two additional issues worth mentioning. First, income estimates should make allowances for the subsistence economy. However, there is little systematic evidence of its size (particularly relevant in the early decades of the 20<sup>th</sup> century), which could be used to make an adjustment (Berg 1970). When adults in the subsistence sector are included in the census, I am assigning them an income equal to the unskilled wage. To the extent that the measured total income underestimates the subsistence economy, my estimates are biased

---

<sup>8</sup> Given the nature of the data, I am implicitly assuming that individuals only receive incomes from single sources.

against inequality because it would reduce the actual size of Group 1's income. Secondly, to deal with mixed income, based on the findings of Amarante et al. (2014) I assume that earnings of the self-employed in the lower three occupational groups are largely made up of labor income, and that they can be approximated by the corresponding representative wage in each group.

Table 1 summarizes the EAP shares and relative income ratios in selected years. See outcomes by lustrums in OA1. Differences among the countries' shares are largely driven by variations in the urbanization process, the timing of industrialization, and improvements in education.

TABLE 1: EAP SHARES AND RELATIVE INCOME RATIOS, SELECTED YEARS

	$e_1$	$e_3$	$e_4$	$r_1$	$r_2$	$r_3$	$r_4$	$e_1$	$e_3$	$e_4$	$r_1$	$r_2$	$r_3$	$r_4$	$e_1$	$e_3$	$e_4$	$r_1$	$r_2$	$r_3$	$r_4$
	<b>Argentina</b>							<b>Brazil</b>							<b>Chile</b>						
1920	4.3	44.9	35.2	11.2	0.8	0.59	0.38	3.9	19.2	69.0	8.7	1.6	1.03	0.49	5.1	46.1	41.9	9.0	1.3	0.70	0.41
1940	4.6	43.4	33.6	9.3	0.9	0.64	0.41	3.9	23.9	64.5	11.9	1.1	0.69	0.45	5.5	46.2	40.9	6.8	1.0	0.84	0.42
1950	5.1	51.9	25.5	7.0	1.1	0.68	0.41	3.9	26.4	60.4	11.2	1.3	0.64	0.45	5.6	48.2	37.7	7.0	1.3	0.71	0.40
1960	6.2	54.5	21.2	8.2	0.8	0.53	0.30	4.1	29.9	55.5	11.7	1.4	0.64	0.32	7.5	51.2	32.5	5.1	1.2	0.78	0.38
1980	8.3	53.0	17.3	6.5	0.7	0.51	0.19	6.5	38.0	43.7	8.3	1.0	0.61	0.26	9.6	51.8	22.7	5.2	0.8	0.62	0.19
2000	12.1	47.6	15.1	4.3	0.9	0.46	0.26	8.0	46.7	31.9	5.4	1.3	0.68	0.24	13.7	47.3	22.0	4.2	0.8	0.52	0.21
	<b>Colombia</b>							<b>Mexico</b>							<b>Venezuela</b>						
1920	5.4	28.9	60.7	6.4	1.5	1.11	0.41	3.5	21.0	70.8	9.8	1.5	1.14	0.49	4.0	29.7	60.0	8.5	1.6	1.02	0.43
1940	6.5	27.3	56.9	8.1	1.2	0.92	0.33	2.9	25.5	66.0	7.8	1.9	1.22	0.54	3.6	38.5	50.3	7.3	1.5	1.03	0.44
1950	7.6	30.2	52.0	8.2	1.2	0.82	0.33	2.9	26.7	63.9	15.2	1.5	0.89	0.34	5.0	43.1	43.2	7.5	1.2	0.90	0.32
1960	7.9	29.9	48.9	6.7	1.3	0.78	0.31	4.0	32.6	55.3	11.1	1.3	0.80	0.34	5.0	46.0	37.8	8.4	1.1	0.67	0.33
1980	8.2	37.8	39.8	6.0	1.0	0.69	0.35	7.2	40.8	40.5	5.2	1.1	0.78	0.44	10.3	48.0	24.3	5.3	1.0	0.44	0.28
2000	9.1	40.9	36.0	5.4	0.9	0.61	0.31	9.5	43.9	32.4	5.1	1.2	0.56	0.28	11.4	47.4	23.7	4.1	1.1	0.59	0.33

Notes:  $e_i$  stands for the share of economically active population of group  $i$ . All  $e_i$ s are percentages (%) and three years averages;  $e_2 = 1 - e_1 - e_3 - e_4$ . And  $r_i$  stands for the ratio of the mean income of group  $i$  to the mean income of the whole labor force. All  $r_i$ s are three-year averages, except Mexico in c.1920 which excludes 1919.

By 1920 gross enrolment rates in primary schooling ranged from 78.3% in Argentina, 70.3% in Chile and 62.5% in Colombia to 38.5% in Mexico and 29.4% in Brazil (no data for Venezuela); and it was only by 1980 that all six countries reached full enrolment rates (Frankema 2009, p. 366). Over time, particularly post 1950, there was significant occupational mobility. Whilst the EAP shares of Groups 1 and 2 expanded in Argentina and Chile, the main occupational upgrading in Brazil, Colombia, Mexico and Venezuela occurred across the bottom groups. In general, the  $r_i$ s started to decline from the 1940s onwards, reflecting higher  $e_i$ s in line with better access to secondary and tertiary education and a

rapid rise in average income per worker in the 1960s and 1970s. Meanwhile, the  $r_4$ s had a steady decline starting between 1930 and 1940. This is the result of unskilled wages lagging behind the total average income despite recording real gains during SLPI (Astorga 2017a).

#### OCCUPATIONAL GINIS

With information provided by the shares of the economically active population and the relative income ratios, I calculate various Gini coefficients to measure income inequality across the occupational structure. I pay special attention to the Overall Gini ( $G_4$ ) and the Labor Gini ( $G_3$ ). Having these Ginis is of interest because the dominant forces affecting labor and property income are different. The former is driven by demand and supply conditions in the labor market (and, in turn, influenced by technology and skills formation), as well as by labor-market institutions and policies, whereas property income is primarily driven by factors such as savings and investment decisions, the rate of return to wealth, and inheritance laws.

Here I introduce a total of ten Ginis. A detailed account of their calculation is included in the Appendix (A.1). Table 2 spells out the acronyms of each measure. The Overall Gini is separated into the between-group Gini ( $G_{4B}$ ) and the within-group Gini ( $G_{4W}$ ).  $G_{4B}$  is the inequality that would result if everyone in each of the four groups receives the mean income of the corresponding group.<sup>9</sup>  $G_{4W}$  is the weighted sum of the income inequality of each of the four groups, treating them as separate populations; namely,  $Gg_1$ ,  $Gg_2$ ,  $Gg_3$ ,  $Gg_4$ . Whereas, the calculation of  $Gg_1$  assumes a Pareto distribution, it uses a Normal distribution for the other three Ginis.

The Labor Gini is calculated by adding up the between-group Gini ( $G_{3B}$ ) and the within-group Gini ( $G_{3W}$ ). The former is the inequality that would result if everyone in a given group received the mean income for that group; whereas the latter is the weighted sum of the Gini coefficient each wage group would have if it were a separate population ( $Gg_2$ ,  $Gg_3$ ,  $Gg_4$ ).

---

<sup>9</sup> See the underlying Lorenz curves for selected years in Appendix Figure A2.

The decomposition of  $G3$  sheds light on the contributions to inequality of wage skill premiums which are largely captured in  $G3B$ , and of wage compression within skills-homogeneous groups reflected in  $G3W$ . In turn, such a distinction can inform about the potential role played by key drivers. Whilst skill-biased technological change is a main factor behind increases in premiums, within-group wage dispersion is likely to reflect the effect of labor-market policies such as minimum wages.<sup>10</sup>

TABLE 2: ACRONYMS FOR THE OCCUPATIONAL GINIS

$G4$ : Overall Gini - <i>four groups</i>	$G3$ : Labour Gini - <i>three groups</i>	$Gg_1$ : Gini coefficient of Group 1
$G4B$ : between-group component	$G3B$ : between-group component	$Gg_2$ : Gini coefficient of Group 2
$G4W$ : within-group component	$G3W$ : within-group component	$Gg_3$ : Gini coefficient of Group 3
$G4 = G4B + G4W$	$G3 = G3B + G3W$	$Gg_4$ : Gini coefficient of Group 4

#### WITHIN-GROUP INEQUALITY

This section describes the estimation of income dispersion (which is needed for calculating  $G4W$  and  $G3W$ ), deals with the issue of income overlap, and summarizes robustness checks.

#### WAGE DISPERSION

I assembled new series of wage dispersion measured by the coefficient of variation ( $cv$ ) with a sufficient number of benchmark observations over 1920-2011 to capture underlying trends in within-group income inequality for the lower three occupational groups. Here I present a summary of this task; see Online Appendix 2 (OA2) for full details. For Group 4, I calculated wage dispersion across low-skilled occupations using data from various official publications and social tables. Accounting for the urban-rural divide is a key issue for this group, as I am covering a period where the region underwent a rapid process of internal migration. Where

<sup>10</sup> In Brazil during 1940-1980 the official minimum wage was key in determining unskilled wages and influencing pay for clerical and blue-collar workers; whilst the remuneration of white-collar workers responded to their relative scarcity and profit rates (Camargo 1984, p. 45).



data allow, I included a representative sample of unskilled wages in both rural and urban activities in benchmark years.

To gauge income dispersion in Group 3 and Group 2, I largely relied on industrial censuses and surveys for blue-collar and white-collar workers in manufacturing according to the International Standard Industrial Classification (ISIC) with a breakdown by divisions (two-digits).<sup>11</sup> Ideally, the coverage should include other sectors such as construction and commerce. However, manufacturing is the only sector with enough data across all six countries over the period of analysis. Importantly, its data separate blue- and white-collar workers, which is crucial for constructing comparable and consistently defined proxy series for these two occupational groups. Therefore, I assumed that changes in wage dispersion in both categories offer a reasonable proxy for those in income inequality within the middle groups, particularly in a period dominated by industrialization.<sup>12</sup>

However, the matching of the corresponding skill level is an issue that needs attention. The blue-collar category includes a proportion of unskilled workers, especially in industries such as food and textiles, that should belong to Group 4; and some relatively skilled workers that would be better placed in Group 2. Meanwhile, the white-collar category includes salaries of managers and professionals, which belong to my Group 1, as well as some relatively low skilled clerks that would be better placed in Group 3. Thus, in both cases the direct use of wage dispersion in blue- and white-collar categories would lead to an overestimation of the level of income inequality in Groups 3 and 2.

To address this problem, a downward adjustment to the wage dispersion is needed. Fortunately, there are some data to guide such an adjustment. Shipley (1977) has blue-collar workers in ten manufacturing industries in Argentina during the 1920s, separating unskilled and semi-skilled workers. On average, the dispersion without the unskilled is about

---

<sup>11</sup> Pre-1980s data usually refer to ISIC Rev. 1 with up to 20 industries, and to ISIC Rev. 2 up to 28 industries thereafter.

<sup>12</sup> Although this is likely to bias inequality upwards in years of limited industrial development, the comparative evidence presented in Figure 5 indicates that such an assumption results in occupational Ginis the trajectories of which are broadly consistent with alternative Ginis.

0.87 of the whole blue-collar category. A similar calculation for the period 1986-1991 with Argentina's wage data in manufacturing gives a ratio close to 0.80 (ILO YLS 1996). Regarding the adjustment to the white-collar category, industrial censuses in Mexico in 1935, 1940, and 1945 (DGE 1953) present income data separating directors and managers from other white-collar employees. On average, the dispersion in salaries without the directors and managers is about 0.80 of the whole white collars. Based on these calculations, I downscale blue- and white-collar wage dispersion by 0.85 ( $adj_{bc}$ ) and 0.80 ( $adj_{wc}$ ) respectively over the whole period. Wage dispersion for unskilled workers ( $cv_{unsk}$ ) is left unadjusted, as there is no skills mismatch.

#### INEQUALITY WITHIN THE OCCUPATIONAL GROUPS

The dispersion for the lower three groups is derived from the adjusted coefficients of variation of the series of white- and blue-collar wages, and the original one for unskilled wages as follows:  $cv_2 = adj_{wc} cv_{wc}$ ;  $cv_3 = adj_{bc} cv_{bc}$ ;  $cv_4 = cv_{unsk}$ . These cvs are then used to calculate standard deviations compatible with the representative wages of Groups 2, 3 and 4 obtained in the first stage.<sup>13</sup> This information is then used to simulate a Pen's income parade (Pen 1971) per group and year, assuming a given income distribution function (Modalsli 2015). It is well-known that the entire income distribution is well fitted by a Lognormal distribution with a Pareto upper tail. However, it is a moot point whether this is also true for different groups within a given population. To clarify this empirical issue, I performed normality tests on a representative sample of the wage data for my three lower occupational groups from industrial and occupational surveys in benchmark years. Appendix Table A1 summarizes the results. Four tests are applied, of which the Shapiro-Wilk test tends to have the better power in samples fewer than 100 observations (Yap and Sim 2011). In most cases, the null hypothesis of normality cannot be rejected. The evidence for the more limited unskilled wage data is also dominated by normality, though here there are more rejections of the null hypothesis. Equally, when performing these tests to a selection of perfectly-sorted

---

<sup>13</sup> That is:  $\sigma_i = cv_i * w_i$ ;  $i=2$  to 4, where  $w_i$  is the group  $i$  representative wage.

quantiles in the HBS percentile distributions excluding zero incomes, normality tends to reflect well the income distribution of those quantiles that exclude the top ten percentiles.

#### INCOME OVERLAP AND ROBUSTNESS

I use the definition of ‘well-apportioned’ groups to examine the extent to which the four occupational groups offer an appropriate EAP breakdown that minimizes the potential for income overlap. For a group to have a separate identity the income differences within the group should be less than the differences across the groups, and the weighted sum of within-group Ginis should not be larger than the between-group Gini (Modalsli 2015; Milanovic et al. 2010). Under this definition, my four occupational groups are well-apportioned, and this should translate into limited income overlaps between groups.

Appendix Table A2 includes a summary of income values at different points of the distribution of Groups 4, 3, and 2 in five benchmark years between 1920 and 2000 to inform about the extent of income overlap. They are calculated based on the so-called three-sigma rule of thumb (or 68-95-99.7 rule).<sup>14</sup> The overlap between Groups 4 and 3 is limited and largely affects the economically active population above  $+1\sigma_4$  and below  $-1\sigma_3$ , involving the upper end and lower end of both groups’ income distributions. The overlap is most significant for values above  $+1\sigma_3$  and below  $-1\sigma_2$ . By contrast, although it is not possible to apply the three-sigma rule to the top group, large mean-income ratios between Group 2 and Group 1 in all six countries (column “ $u_1/u_2$ ”) means that the overlap is likely to be minimal.<sup>15</sup>

I performed robustness checks to gauge the impact that different assumptions about income overlap have on the levels and trajectories of  $G3$  and  $G3W$  - the metrics where the effect is most significant. Appendix Figure A3 shows for each country my preferred series accompanied by lower- and upper-bound series. The lower-bound estimates are obtained by reducing the standard deviation of Groups 3 and 2 by 20% uniformly over the period. This

---

<sup>14</sup> This rule states that, for a normally distributed variable, 68% of all values lie within one standard deviation of the mean ( $u \pm \sigma$ ), 95% within two standard deviations ( $u \pm 2\sigma$ ), and 99.7% within three standard deviations of the mean ( $u \pm 3\sigma$ ).

<sup>15</sup> In support to this claim, detailed social tables in Mexico in 1930 and 1940 show equivalent income ratios of 13 and 6.3 respectively (Castañeda and Bengtsson 2020).

downward adjustment produces near perfectly sorted groups (results not shown). The upper-bound values are obtained by assuming that wage dispersion in the two middle groups matches that of the unadjusted blue- and white-collar workers. As expected, lower dispersion in both groups reduces inequality levels over the period, especially of  $G3W$ , and vice versa. In general, the confidence intervals in  $G3W$  widen over time as the relative sizes of Groups 2 and 3 increase (for example in Brazil and Mexico). But, overall, they translate into much narrower margins in  $G3$ , where trajectories are largely unaffected.

Regarding income inequality in the top group, what would be the impact on  $G4W$  and, more importantly, on  $G4$  of any misrepresentation of the “true income inequality”? To answer this, I perform a sensitivity analysis assuming upper- and lower bounds of  $\pm 20\%$  of  $Gg_1$  from the baseline. This exercise shows that the impact on  $G4$  is minor, though more significant in  $G4W$  towards the final decades (Chile). Such an outcome is to be expected (Alvaredo 2011) because, although the top group’s inequality is the largest of all four groups, its contribution to  $G4$  is relatively low owing to its reduced share of the economically active population. OA3 offers further details.

## THE INEQUALITY EVIDENCE

This section offers a detailed presentation of the results and addresses the central questions of the paper. I begin by examining the countries’ performance according to the Overall Gini, the Labor Gini and its within-group component. This adds nuance to the study of diversity and commonality over the two epochs. Next, my aggregate Ginis are compared with alternative income Ginis based on social tables and household budget surveys to check for consistency and assess their plausibility. Also, I highlight country-specific episodes likely to have influenced inequality trajectories particularly before 1980. The section ends with a discussion on inequality levels and evidence of persistence.

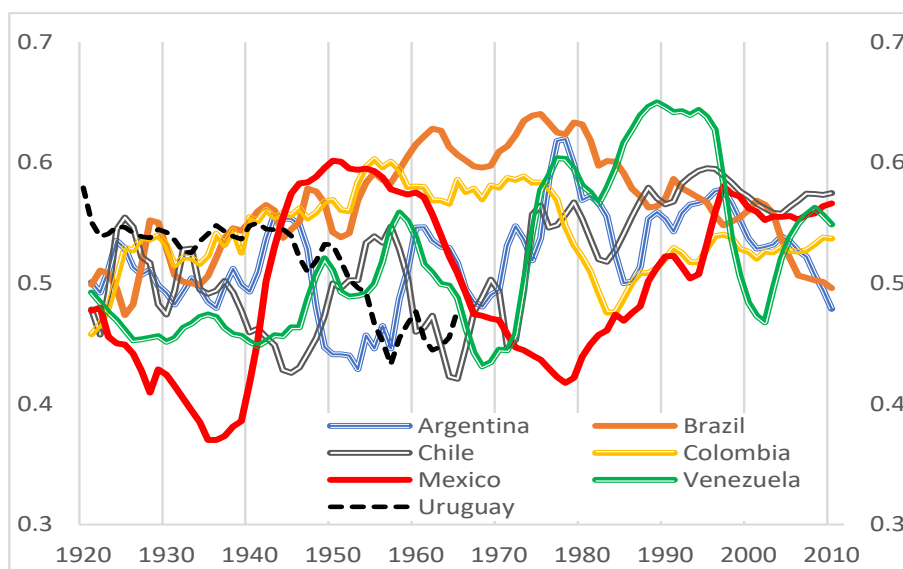
## INEQUALITY ACROSS THE OCCUPATIONAL STRUCTURE AND EPOCHS

Examining developments at different layers of the occupational structure is of interest for at least two reasons. First, the comparison between  $G4$  and  $G3$  sheds light on the

differentiating distributional effect of the top group. Owing to a large average income gap between the top group and the lower three wage-based groups, changes in *G4* are driven by developments in the income share of the high earners. This means that inequality dynamics in *G3* could well be overlooked if the analysis were centered on *G4*. Indeed, correlations between both measures in Appendix Table A3 show that for the whole period, they are relatively low (higher in Brazil and Mexico) and positive (except in Venezuela). Secondly, the decomposition of *G3* into between- and within-group components reveals dynamics in *G3W* that are largely omitted in the aggregate outcome, which is driven by changes in *G3B*.

Are the state-led protected industrialization and the export-led growth epochs also distinctive in terms of their inequality outcome? Figure 2 shows the *G4* in the LA6 plus a largely comparable Gini of Uruguay up to 1966, thus widening the country coverage during most of SLPI. Whilst XLG is dominated by commonality of rising inequality in the 1980s, a levelling off in the 1990s, and a fall in the 2000s; SLPI is marked by diversity. Regarding inequality levels, there is a move towards convergence during export-led growth and increased divergence during protected industrialization.

FIGURE 2: OVERALL GINIS BY COUNTRIES IN THE LA6 & URUGUAY



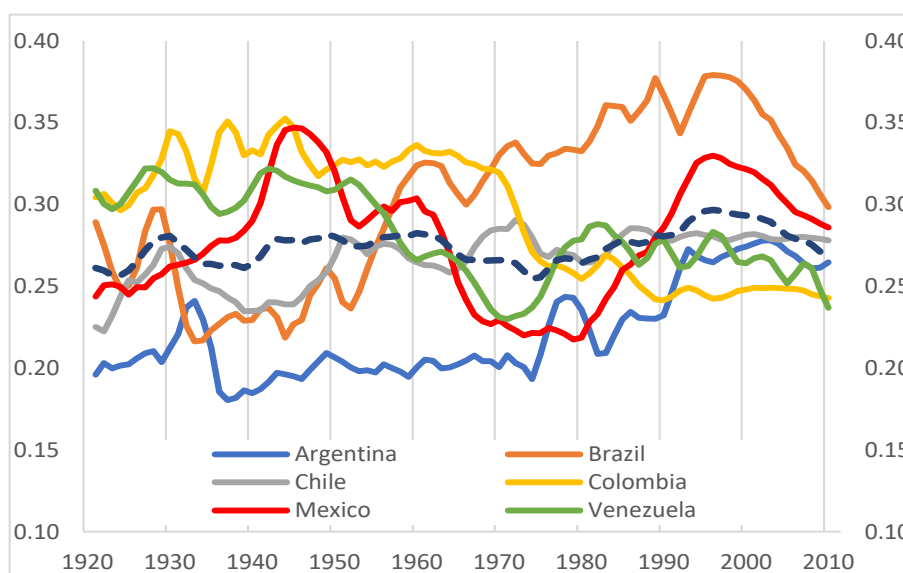
Notes: all series are 3-year moving averages except Uruguay (Bértola 2005).

Figure 3 shows country trajectories in *G3*. As in *G4*, there is a contrast between the dominance of trend commonality in XLG and mixed inequality trajectories during SLPI. In the

last two decades of the last century inequality rose in Argentina, Brazil, Chile, Colombia (only up to 1985 and, modestly, in the 1990s) and Mexico. Venezuela is an exception. And all six countries shared falling trends and converging levels in the 2000s. On the contrary, trend diversity is the norm during the core years of industrialization. For instance, rising inequality between the mid-1940s to c.1980 in Brazil, a prolonged episode of narrowing inequality from the early-1960s to c.1980 in Mexico, and roughly constant inequality at a relatively low level from 1950 to the mid-1970s in Argentina. Also, there is divergence in levels, particularly after 1940. Such contrasting outcomes reflect, among other factors, different timing in structural change, advances in education, development of manufacturing, as well as variations in the intensity of import substitution. Whereas, by the 1980s countries were structurally more similar, and largely adopted the policies dictated by Washington Consensus.

Figure 4 shows trajectories of  $G3W$ . As in  $G4$  and  $G3$ , the 1980s and 1990s are characterized by rising trajectories; and a change of direction in the 2000s. However,

FIGURE 3: LABOR GINIS BY COUNTRY

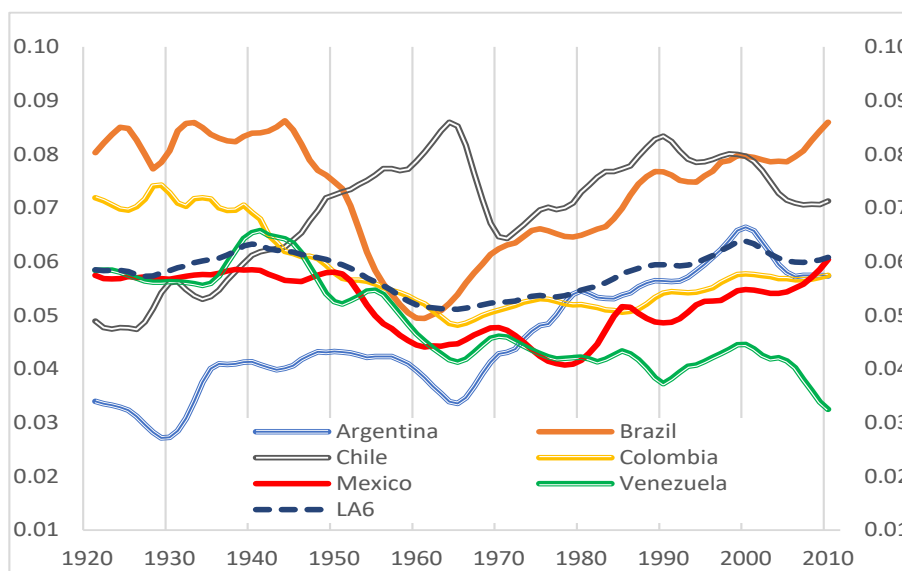


Notes: all series are 3-year moving averages.

according to this measure of wage dispersion, the central decades of protected industrialization are dominated by commonality in narrowing trends. They are particularly prolonged in Mexico and Venezuela, extending from c.1950 to the end of the 1970s; and

also significant in Argentina from 1950 to the end of the 1960s, Brazil between mid-1940s to early-1960s, and Colombia from c.1940 to the mid-1960s.

FIGURE 4: *G3Ws* BY COUNTRY



Notes: all series are 3-year moving averages.

Generally, a contraction in the wage structure is consistent with a substantial growth in unionization rates and increases in the minimum wage. Chile is an exception with rising *G3W* from the mid-1930s to mid-1960s, and again in the 1970s after a sudden fall in the second half of the 1960s. This pattern is driven by rising dispersion in blue-collar wages that outweighed an opposite trend in unskilled wages from mid-1950s to mid-1970s (see Figure OA3.4).

Were there levelling episodes? <sup>16</sup> The answer depends on the inequality measure used and on the definition of a “levelling episode”. The “Great Levelling” (Lindert and Williamson 2016) in the US and the UK offers a benchmark for my definition. In the US there was a 20% fall in the Gini coefficient between 1929 and 1945, followed by about 30 years of low and stable inequality; whilst, the UK saw a fall of 17% between 1935 and c.1949, with inequality staying at a low level for a similar number of years (Atkinson 2015, Figures 1.1 & 1.2). In

<sup>16</sup> Using a mix of metrics, Rodríguez Weber (2018) identifies periods of “small levelling” of income inequality during industrialization, particularly when structural change was accompanied by pro-labor institutions (for example, Chile and Uruguay).

both cases the implementation of neoliberal policies in the late 1970s marked a turnaround in inequality.

TABLE 3: LEVELLING EPISODES IN THE LA6

<b>Argentina</b>	1943-53	-20.7%	1953-74	10% <sup>(1)</sup>
<b>Brazil</b>	-	-	1996-2011	-22.5%
<b>Chile</b>	1955-65	-27.3%	1930-39	-16.2%
<b>Colombia</b>	1973-84	-19.7%	1969-79	-20.0%
<b>Mexico</b>	1920-36	-20.3%		
	1960-78	-27.7%	1956-75	-24.3%
<b>Venezuela</b>	1958-68	-27.3%	1953-73	-25.4%

Notes: “levelling” refers to start-to-end falls in the Gini in the “period”. (1) type II episode. Calculations based on 3-year moving average series.

For the LA6, I distinguish two types of levelling episodes: “type I” defined as a period of narrowing inequality that lasted at least 10 years with a start-to-end fall of 15% or higher; and “type II”, a period of 10 years or longer of relatively low inequality where the episode’s average Gini was at least 10% below the average for the whole period. Table 3 shows results for *G4* and *G3*.<sup>17</sup>

Most of the levelling episodes occurred during SLPI, and many were interrupted by steep reversals in the 1970s. Mexico offers the only case with a coinciding levelling episode in both Ginis in 1960-1975, and Argentina 1953-1975 has the only type II episode. A somewhat surprising outcome is that, despite the prevalence of narrowing inequality in the 2000s, there are only two episodes according to my definition. Therefore, if we are looking for shared levelling episodes, they are found during the industrialization years. Although in the LA6 there were inequality falls of a similar magnitude (or higher) as in the US and the UK, the consolidation of the lower level of inequality was missing. Levelling there was, but it fell short of being “Great”.

<sup>17</sup> Bértola’s Gini of Uruguay (Figure 2) offers another levelling episode with an 18.4% fall between 1950 and 1965 (though, with a rebound in 1960).



## COMPARISONS WITH ALTERNATIVE GINIS

In Figure 5 my *G4s* and *G3s* are compared with social-table Ginis for Brazil, Chile, Colombia and Mexico, together with all-incomes HBS Ginis for the six countries in the more recent decades (*GiniHBS* in the charts). Also, it shows adjusted Ginis (with corrections for underestimation of high-earners' income) for Argentina, Brazil and Chile. One would expect to find consistency, on the one hand, between trends in *G4s*, social-table Ginis and adjusted Ginis as all three measures capture property income; and, on the other, between changes in *G3s* and HBS Ginis as both, despite being constructed differently,<sup>18</sup> are based on labor income which should provide a common ground for co-movements.

Generally, there is trend consistency between the Overall Ginis and the social-table Ginis, especially in Chile and Colombia over 1920-1972 and 1937-1993 respectively. And in the later decades, *G4s* are in tune with the adjusted Ginis in Brazil and Chile. Moreover, *G3s'* movements tend to match those of *GiniHBS*, particularly in Argentina, Colombia and Mexico; and, in all countries, during the 2000s.<sup>19</sup> In what follows I provide a more detailed account - though partial for extension's sake - of the inequality outcome in each of the countries. I highlight particular episodes or periods and summarize explanations based on the actions of fundamental forces and policies given in the literature.

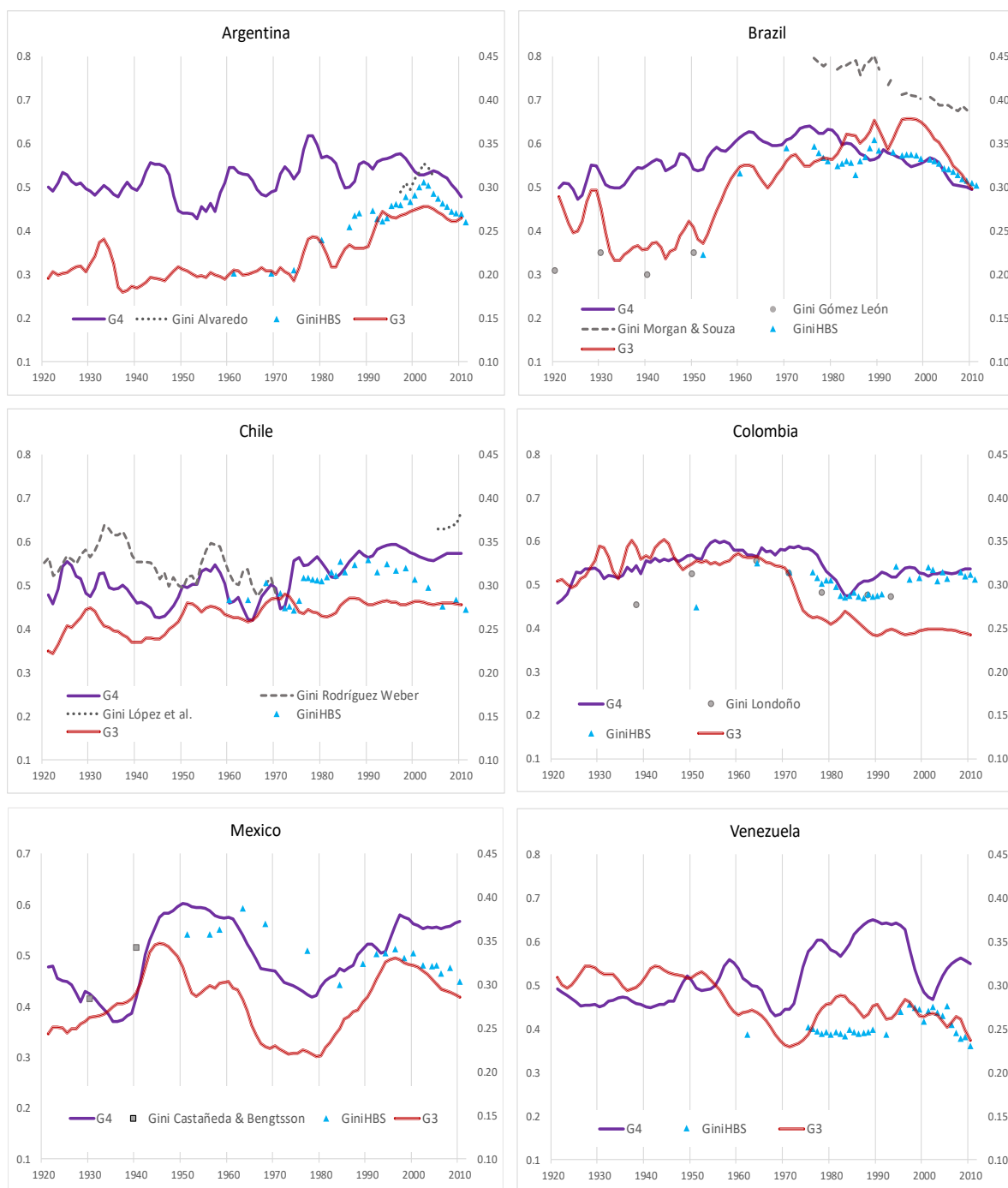
In Argentina there is still debate about what happened to inequality in the 1920s, though a decline is considered as the most likely outcome (Gerchunoff 2016). My evidence shows a moderate fall in *G4* with reinforcing moves in *G4B* and *G4W*, which support the view of an equalizing trend during this decade. However, *G3* displays a rising trajectory with opposite moves in *G3B* (rising) and *G3W* (falling), indicating that the inequality pattern is contingent on the metric used. The relatively low and stable level of *G3* since the end of the 1940s

---

<sup>18</sup> For instance, changing vs. fixed EAP shares; non-perfectly-sorted vs. perfectly-sorted data; the use of records at work vs. surveys at home.

<sup>19</sup> Though my Ginis exclude the impact of policies such as conditional cash transfers, the inequality fall in the region during the 2000s was driven by strong growth of low-skilled wages (Azevedo et al. 2013) – which is accounted for in my *G3s*.

FIGURE 5: OVERALL AND LABOR GINIS WITH ALTERNATIVE GINIS



*Notes:* all *G4*s and *G3*s (plotted on the right axes) are three-years moving averages. Levels for *GiniHBS* are set using Ginis of equalized income without zeros from CEDLAS in Argentina 1974-2011, Brazil 1981-2011, Chile 1987-2011, Colombia 2001-11, Mexico 1989-2010, Venezuela 1989-2006. The series move backwards with changes of other HBS Ginis as follows: Argentina, Altimir's compilation in Thorp (1998, Stat. App.) to 1961; Brazil, IBGE to 1976, Altimir to the early 1960s; Chile, Rodriguez Weber (2014) to 1971, Altimir to 1960; Colombia, ECLAC per-capita Gini to 1991, DANE (13 main cities) to 1976, Altimir to early 1950s; Mexico, Szekely (2005) to 1951; Venezuela, Baptista (1997) per-capita Gini to 1962, and extended to 2010 with per-capita Ginis from ECLAC.

agrees with consensus. Wage regulation became part of government policy during Perón's administration (1946-1955), and remained in place until the mid-1970s.

Protected industrialization enabled the system of wage setting to avoid foreign market pressures and to keep the labor share of income comparatively high (Frankema 2010). Inequality jumped in 1976/77 as the government imposed a freeze on wages in an attempt to halt hyperinflation. Regarding *G4*, there are significant increases in the 1940s and from the late-1950s to the mid-1960s, driven by a higher income share of the top group.<sup>20</sup> Two underlying likely reasons behind the first boost were a policy of wage contention during the Second World War and favorable commodity prices after 1944 (MOxLAD) benefiting landowners. The second boost is associated with the 1959 stabilization plan and an economic crisis in 1962/63, which hit labor income disproportionately (Lindenboim et al. 2005).

In Brazil, it is possible to make a comparison with social-table Gini benchmarks in 1930, 1935, 1940 and 1950 from Gómez León (2021). Although her levels are lower, the trends broadly match those in *G4*. A second comparison is made with the Gini of Morgan and Souza (2019), which combines tax and HBS data from 1976 to 2010, with both measures displaying a downward secular trend. The years between 1945 and 1974 are the golden age of protected industrialization in the country, with GDP growing at an average annual rate of 7.6%, and at 10.7% between 1968 and 1974 (IBGE). This was supported by sustained capital accumulation that, in the context of firms with market power operating under protection, was likely to favor profits and high-earners' income in general.

The steady increase in inequality captured in *G4* and *G3* has been given three broadly complementary explanations: skill-biased technological change amid a poor education effort boosting skill premiums (Langoni 1973); labor policies that curbed the power of trade unions and weakened wage regulations (Frankema 2012); and, a systematic under-indexation of

---

<sup>20</sup> These are broadly in tune with movements in the share of Gross Operating Surplus and, in the 1940s, with changes in the income share of the top 1% (Appendix Figure A1).

wages in periods of high inflation (for example, 1959-1966), particularly affecting the minimum wage (Bacha & Taylor 1978; Souza 2018).

In Chile, matching trajectories in my Overall Gini and Rodríguez Weber's social-table Gini is of no surprise because his work is my main source for wage data for this country. Importantly, this also shows that the use of only four "well-apportioned" occupational categories can do a good job at capturing the evolution of income inequality estimated with a much greater level of disaggregation. Inequality rose during most of the 1950s as the government imposed a freeze on wages to fight accelerated inflation. It peaked towards the end of the decade and then fell to the mid-1960s. The change in direction reflects a distributive policy agenda led by an agrarian reform, the promotion of unionization and a recovery in the minimum wage (Rodríguez Weber 2014).

Following the 1973 military coup, *G4* saw a step change and remained at a higher secular level afterwards only interrupted during the 1981-1983 economic crisis. A contraction in real wages, and in particular of the unskilled, was instrumental in boosting high earners' income share. And the implementation of neoliberal policies under the Pinochet regime consolidated conditions for higher inequality. However, *GiniHBS* (based on surveys in the Greater Santiago in the 1970s) jumped in 1975 and remained at a higher level during the rest of the century. In the 2000s this Gini shows a fall coinciding with the start of the commodity boom in 2002. But once the surveys' data are corrected by the underestimation of the high-earners' income (López et al. 2013), the corrected Gini shows a rising trend between 2005 and 2010, as in my *G4*.

In Colombia, Londoño (1997, 1995) provides income Gini in seven benchmark years between 1938 and 1993 using a combination of national accounts, employment data and household budget surveys. His Gini show a rise in inequality from 1938 to 1964 and a change in direction in the 1970s. The upward trend has been attributed to a combined effect of large surplus labor, modernization of agriculture, rural violence and land concentration. Conditions started to change later in the 1960s with a marked inequality decline in the early 1970s driven by the expansion of education in the 1950s together with a reduced surplus

labor in rural areas which translated in lower skill premiums in the cities (Ocampo & Tovar 2000). The rapid fall in inequality during the 1970s, particularly in *G3*, was also supported by strong growth in real unskilled wages (Astorga 2017a).

In Mexico, the social-table Ginis of Castañeda & Bengtsson (2020) show a significant rise in inequality between 1930 and 1940; an outcome that is also present in *G4* and, particularly, in *G3*. But what happened in between those benchmarks, and during crucial post-Revolution 1920s? There is a contrast between a rise in *G3* driven by an increase in wage premiums and a decline in *G4* in line with a shrink in the top group's income share reflecting drastic changes in institutions and policies (for example, agrarian reform, introduction of minimum wages), as well as the destruction of productive assets during the 1910s. Then, inequality rose in the 1940s and reached a plateau in the early 1950s. This has been associated with the surge of business opportunities created by the war effort in the US amid subdued wages in Mexico, boosting income at the top (Felix 1997). The 1960s and 1970s show a long spell of narrowing inequality, consistent with favorable minimum wages and high unionization rates (Márquez Padilla 1981).

Finally, in Venezuela scant wage data prior to 1936 mean that my estimates for those years should be taken with caution. According to Valecillos (2007, p. 103), the general picture of the labor market was one dominated by roughly constant wages and a stable wage structure up to the mid-1930s. Then, labor and property income started to rise gradually, driven by the rapidly growing importance of the buoyant oil industry. The upward trend in *G4* during 1936-1959 reflects a rapid process of urbanization with surplus labor creating downward pressure on unskilled urban wages. Also, strong public spending on infrastructure projects favored income concentration.

The 1960s and the early-1970s show an improvement in income distribution consistent with an easing of the labor surplus, further increases in urban wages, and rapid expansion of the middle classes (Valecillos 2007). The rise in *G4* from the early 1970s to the mid-1990s is driven by a drastic fall in the income ratio of the bottom group (Table OA1.2). Also, a sustained fall in physical capital accumulation boosted returns to capital (Rodríguez 2000).

Meanwhile, *G3* declined steadily amid a sustained fall in real wages, especially of relatively skilled workers (Astorga 2017a). The sudden fall in *G4* in the early 2000s coincides with a general strike and the interruption of oil production in 2002/03, resulting in a severe contraction in total income which affected Group 1's income more than proportionally.

#### ON LEVELS AND PERSISTENCE

So far, I have focused the discussion on trajectories, but the occupational Ginis also inform on inequality levels. My *G3s* are bound to be lower than those calculated from household surveys for various reasons, such as the exclusion from the former of labor income for professionals and managers. Equally, *G3s'* levels are necessarily lower than *G4s'*, because of the addition of the top group in the latter. Over the whole period the LA6 single average of the Overall Gini is 0.55 compared to 0.27 of the Labor Gini. And *G4s'* levels tend to be more stable than *G3s'*, with a simple LA6 average of the coefficient of variation of 2.2% compared to 4.6% of *G3*. Greater fluctuations in the latter suggest that inequality dynamics of structural change and shifts in labor-market policies are likely to have had a stronger distributive impact on the income of the lower three groups. Although the inclusion of the Group 1 tends to dampen inequality fluctuations, *G4* also exhibits significant movements in the short to medium term indicating the action of forces related to the commodity cycles (Rodríguez Weber 2023) or internal political changes.

Is there any evidence of persistence in country trajectories? To examine the extent of persistence over the long term, it would be necessary to look at inequality across generations originating in factors such as inheritance and education (Piketty 2000). But this would require the analysis of micro data which is beyond the scope of this paper. Also, tracing the lingering effects of colonial institutions calls for the coverage of the 19<sup>th</sup> century. That said, the concept of stationarity enables a rigorous assessment of persistence and stability in my Overall and Labor Ginis over the 1920-2011 period. A time series is stationary if its statistical properties, such as the mean and the variance, do not change over time. One important implication is that stationary series exhibit mean reversion: after a one-time shock

the series tends to revert to its constant mean. By contrast, non-stationary series are time dependent, and their behavior tends to exhibit trend shifts or follow a random walk over time. My working hypothesis is that reversion of inequality to the long-term mean can be taken as a necessary condition for persistence.

The Phillips-Perron unit-root test (*P-P test*) is commonly used in the literature to check for stationarity in time series (Phillips and Perron 1988). After performing the *P-P test* the following series proved to be stationary:<sup>21</sup> *G4*(1%) in Argentina; *G4*(1%) and *G3*(10%) in Chile; *G4*(1%) in Colombia. In Argentina and Colombia, adding Group 1's income to a non-stationary *G3* makes *G4* stationary. One possible interpretation of this result is that an effective concentration of power at the top paved the way for the high earners' relative success in either defending or increasing their share of the countries' income. In Brazil, Mexico and Venezuela the null hypothesis cannot be rejected. The reasons for such contrasting outcomes across the LA6 need further research.

## CONCLUSIONS

This paper makes a contribution to multi-country studies, particularly during the industrialization years, by examining income inequality in Argentina, Brazil, Chile, Colombia, Mexico and Venezuela during the period 1920-2011 using a new dataset. These six countries have accounted for over 80% of the region's population and GDP since 1920, and, thus, their inequality performance provides a regional perspective, though it does not capture the rich variety of a wider country coverage.

The analysis of the evidence stresses the importance of distinguishing between the inequality outcome of the whole labor force and that originating in wage-based occupational groups, with LA6 aggregates showing significant differences in trajectories of the Overall and Labor Ginis. Shifts in secular trends in the latter are broadly consistent with Frankema's conjecture, and match the evolution of Ginis based on household budget surveys since

---

<sup>21</sup> In brackets are the significance level according to the test statistic  $Z(t)$ . Null hypothesis (H0): random walk without drift. All tests performed on variables at level, with a constant term (no trend).

1970. However, regional averages hide significant country disparities and, therefore, generalizations need to be taken with caution.

Given the limited availability – and comparability – of household surveys prior to the 1980s and the difficulties of using tax records, this work offers unique comparable evidence informing about income inequality in the region over the long term. The methodology and data sources both have their limitations, particularly the lack of direct estimates of property income, the inevitable relatively narrow sectoral scope for wage dispersion, and a reduced, though well-apportioned, number of occupational groups. Also, during the estimation work it was necessary to make numerous assumptions of varying quality and with the potential to introduce biases. Thus, it cannot be ruled out that changes in some of them could alter the reported outcomes. However, inequality trajectories are robust to the use of alternative assumptions on income overlap between the wage-based groups, the extent of Group 1's income inequality, and changes in the income concept.

By extending the coverage up to 2011, this dataset spans the epoch of state-led protected industrialization where the evidence comes primarily from social tables, and the decades of export-led growth where the prevailing data sources are household budget surveys. Moreover, by facilitating comparisons with a variety of metrics it can shed light on the extent to which a common inequality story can be told regardless of the metric used. Such comparisons also allow for checking the plausibility of my series. Country trajectories of *G4* roughly match those of alternative social-table Ginis; and movements in my *G3* tend to be consistent with those in household surveys.

The answers to the central questions of this paper are as follows. First, my analysis reveals that overall, despite similarities in colonial institutions and the process of economic development, a significant degree of country diversity in trajectories in both *G4* and *G3* questions the validity of the general assumption that Latin America is homogeneous in its inequality.

Secondly, the epochs of SLPI and XLG are distinct in their inequality outcomes. The latter is dominated by commonality in trajectories and convergence in levels in *G4* and *G3*; the



former by trend diversity and level divergence reinforcing findings in Arroyo and Astorga (2017). Such contrasting outcomes point to differences in the timing of structural change, disparities in advances in education and the demographic transition during SLPI; and in the case of XLG, to more similar economies in terms of their structure, urbanization rates and education levels, together with the adoption of the neoliberal policies of the Washington Consensus. However, when looking at within-group inequality in the wage-based groups, coinciding trends dominate but in opposite directions across epochs: falling during SLPI and rising in XLG. This reflects a shift in labor policy from a greater role for wage-setting regulations and unionization rates to the promotion of labor flexibility, deregulation and weaker unions.

Thirdly, there were a number of lasting episodes of inequality levelling, particular during SLPI, extending the findings of Rodriguez Weber (2018) but with the advantage of using comparable series. However, those favorable dynamics fell short of matching the “Great Levelling” that occurred in the middle decades of the last century in the US and the UK – and, more generally, in Northern Europe. The underlying reasons behind such episodes are to be found in the combined action of fundamentals and policy changes - both of pre-distribution and redistribution type. Regarding the latter, whereas in the US and the UK higher marginal taxes at the top and progressive redistribution were instrumental in reducing inequality, LA6 governments primarily relied on pro-labor (pre-distribution) measures. In particular, the official minimum wage was an effective tool to raise the relative income of the unskilled, though it was also used as an instrument to fight accelerating inflation which widened inequality. But, in general, there was a lack of an effective and higher taxation on high earners and limited efforts in setting up progressive income taxation in the LA6.

Lastly, although a comprehensive analysis of persistence should look at micro inequality data across generations and cover the 19<sup>th</sup> century, evidence of reversion of income inequality to its long-term mean offers a test for a necessary condition for persistence. I found mean reversion only in the *G4* series in Argentina and Colombia, and *G4* and *G3* in Chile. The reasons for such contrasting outcomes across the LA6 need further research.

Still there is more work to do in terms of identifying the drivers behind inequality trajectories; to find out why countries that are similar in so many respects have so much inequality diversity. One obvious place to look for answers is country specificities (for example, dominant export commodities, hyperinflation bouts, and political regimes) which could account for notable differences in trajectories.

A second option is to explore the possibility that, despite diversity in aggregate inequality outcomes, there is, nonetheless, a degree of common ground in the action of fundamentals behind them. One interpretation of the evidence is that it reflects the combined action of drivers with different timings (for example, urbanization and demographic transition), opposite directions in their likely inequality impact (labor-market policies) and varied intensity. Also swings in the terms of trade have the potential to affect income of both high earners and unskilled workers alike. To disentangle the action and contributions of underlying drivers, a regression analysis is required. Moving from revealing diversity and complexity to accounting for them is the next step in this research.

Despite the largely shared narrowing inequality of the 2000s, at the start of the 2020s high concentration of income and wealth still remains a salient feature of Latin America (WID). The study of the past shows that pro-labor policies and income transfers targeting the poor were effective in reducing income inequality. But the end of the commodity boom exposed the vulnerability of over reliance on external sources to pay for redistribution programs. Whilst the severe setback of the Covid-19 pandemic to human development in the region urgently requires a substantial step up of spending on health and education. Both call for a broader tax base and a higher tax collection. One obvious option is to raise the tax contribution of high earners to fund spending benefiting primarily those at the bottom of the distribution. But the question is, as always, *who will tie the bell on the cat*. At the end of 2022, Colombia's government approved a tax reform bill, the main measure of which is a progressive wealth tax. Although success is by no means guaranteed, it is a welcome move in the right direction that could be an example for others.

## APPENDIX

### A.1 CALCULATION OF OCCUPATIONAL GINIS

This note describes in detail the construction of the Overall Gini (including all four groups) and the Labor Gini (lower three groups). Both measures are decomposed into their between-group and within-group components.

*Overall Ginis:*

$$(1) G4 = G4B + G4W,$$

where  $G4B$  stands for between-group inequality and  $G4W$  for within-group inequality.<sup>22</sup>

$G4B$  is the inequality that would result if everyone in a given group received the mean income for that group. Figure A2 shows the underlying Lorenz curves for 1925, 1950, 1975 and 2000 in each country. They are calculated from the groups' relative incomes ratios and their corresponding economically active population (EAP) shares in a given year:

$$(2) G4B = \sum_{i=2}^4 \sum_{j=1}^{i-1} e_j e_i |r_j - r_i|,$$

$G4W$  is the weighted sum of the Gini coefficient each group would have if it were a separate population ( $Gg_i$ ):

$$(3) G4W = e_1 s_1 Gg_1 + \sum_{i=2}^4 e_i s_i Gg_i.$$

The contributions to  $G4W$  of Group 1 and the three lower groups are presented separately because the estimation method is different. To measure within-group inequality in the later the corresponding income ratios are estimated with the use of a Normal distribution with each group's EAPs divided into 25 quantiles ( $N=25$ ).<sup>23</sup> The respective Ginis for a given year are calculated as:

$$(4) Gg_i = \sum_{j=2}^N \sum_{k=1}^{j-1} e_j e_k |r_j - r_k|; \quad i = 2 \text{ to } 4.$$

The calculation of  $Gg_1$  is based on the income shares accruing to the top quantiles of the distribution estimated from tax records for Argentina (since 1932), Brazil (1926), Chile (1962), and Colombia (1993). Under the assumption that the income distribution at the top follows a Pareto form, Fiscal Ginis for the top 1%, 5% and 10% are assembled following

---

<sup>22</sup> Owing to lack of micro data I do not adopt the traditional decomposition approach (Lambert & Aronson 1993) that includes a term for residual inequality reflecting any income overlaps between groups. Therefore,  $G4$  is a gross measure rather than the Gini that would result if the population were perfectly sorted by income (Modalsli 2015).

<sup>23</sup> Calculations are done in Excel with the NORMINV function with three parameters: the cumulative EAP share with increments of four percentage points ( $=1/25*100$ ), and the mean income and standard deviation of each group in a given year. The  $Gg$ s are robust to changes in  $N$  (for example.,  $N=20$ ;  $N=30$ ).

Alvaredo (2011). Additional series for the top 3% and the top 7.5% are obtained as a simple average of the adjacent Fiscal Ginis. The final step is to calculate  $Gg_1$  for each country by matching in each year between 1920-2011 the EAP shares of the top occupational group ( $e_1$ ) with the appropriate Fiscal Gini out of the five options ranging from top1% to top10%. For instance, for the interval  $4\% \leq e_1 < 6.5\%$ ,  $Gg_1$  is matched with the corresponding Fiscal Gini of the top 5%. I use different procedures for Mexico and Venezuela. See OA3 for full details.

*Labor Ginis:*

The Ginis for the three lower groups are calculated as:

$$(5) \quad G3 = G3B + G3W,$$

where  $G3B$  stands for between-group inequality and  $G3W$  for within-group inequality.

$$(6) \quad G3B = \sum_{i=3}^4 \sum_{j=2}^{i-1} e'_j e'_i |r'_j - r'_i|,$$

where,  $e'_i$  is the EAP share of group  $i$  out of the total for three lower groups, and  $r'_i$  is the ratio of the mean income of group  $i$  to the mean income of the three lower groups. In practice, these ratios are calculated as  $w_i/w$ ,  $i=2$  to  $4$ ; where  $w$  stands for the average wage using  $e_i$ 's as weights.

$G3W$  is the weighted sum of the Gini coefficient each group would have if it were a separate population:

$$(7) \quad G3W = \sum_{i=2}^4 e'_i s'_i Gg_i, \quad \text{with } s'_i = e'_i r'_i.$$

Finally, a comment on the history of this research is in order. In the first stage, I assembled wage series for the three lower categories and estimated the mean income of Group 1 as a residual. With this information, I calculated  $G4B$  and  $G3B$ , which were the focus of previous publications. At that time, there was insufficient data to inform consistently on within-group inequality for the whole period. But much-improved online availability of historical wage statistics, together with new contributions from the tax-records strand have enabled me to undertake this second stage. Data demands were also reduced significantly by starting the estimation in 1920 rather than in 1900 as in the first stage.

## A.2 TABLES AND FIGURES

TABLE A1: NORMALITY TESTS OF SHAPIRO-WILK, ANDERSON-DARLING, LILLIEFORS, AND JARQUE-BERA

	Non rejection of H0 at the 5% significance level		Rejection of H0; Ha accepted at 5% level <i>in four or three tests</i>
	<i>in four or three tests</i>	<i>in two tests</i>	
<b>Industrial Surveys and Censuses</b>			
<i>blue-collar workers</i>	Ar1917(13), Ar1937(63), Ar1963(19); Br1920/28(70), Br1949(20), Br1973/84(18), Br1984(21); Ch1928(20), Ch1937/57/67 (22), Ch1953(19), Ch1975/80(27), Ch1987(27) ; Co1934(33), Co1936(20), Co1942(26), Co1963(19), Co1976/86(27); Mx1940(50), Mx1946/47/49(32), Mx1960(19); Ve1953(17), Ve1971/76(26)	Br1959(20); Mx1950(32), Mx1990(26); Ve1986(25)	Mx1930(44), Mx1948(32), Mx1986(29)
<i>white-collar workers</i>	Ar1963(19); Br1959(20), Br1973(21), Br1984(21); Ch1928/37(18), Ch1953/57/67 (22), Ch1980/84(27); Co1936(20), Co1942(26) , Co1963(19), Co1976/86(27); Mx1960(19), Mx1986/90(26); Ve1953(17), Ve1971/76(26), Ve1986(25)		Ch1975(22)
<b>Occupational Surveys and Censuses</b>			
<i>low-skilled occupations</i>	Mx1935/36(14) rural & urban		
<i>low-skilled urban occupations ILO/OI</i>	Ar1936(8)		Ch1938(8)
<i>blue-collar &amp; construction workers (ILO/OI)</i>	Co1938(17); Ve1943(20)	Mx1940(17)	Ar1936(20); Ch1938(20)
<i>semi-skilled workers</i>	Mx1935/36(25) urban		
<b>Official Household Budget Surveys - centile structure</b>			
<i>c1-c35</i>	Br1976/1995; Ch1992/1998/2009; Co2007/2010; Mx1984/92/98/2004	Ve1993/2005	Br1985/2005; Ve1985
<i>c36-c70</i>	Br1985, Br1995/2005; Ch1992/1998/2009; Co2007/2010; Mx1984/92/98/2004; Ve1993		Br1976; Ve1985/2005
<i>c71-c90</i>	Br1976/1985/1995/2005; Ch1992/1998/2009; Co2007/2010; Mx1984/92/98/2004; Ve1985/1993/2005		
<i>c71-c95</i>	Mx1984 ; Ve1993, Ve2005	Br1976/1985/1995; Ch1992/1998/2009; Co2007/2010; Mx1992/1998/2004; Ve1985	Br2005

Notes: Figures in brackets stand for number of observations. H0: the variable from which the sample was extracted follows a Normal distribution. Ha: the variable does not follow a Normal distribution. Surveys in *italics* mean that the Shapiro-Wilk test is rejected. All tests are performed with XLSTAT. ILO/OI stands for International Labor Organization's October Inquiry. Sources: see OA2.

TABLE A2: INCOME OVERLAPS BETWEEN THE THREE LOWER GROUPS, SELECTED YEARS

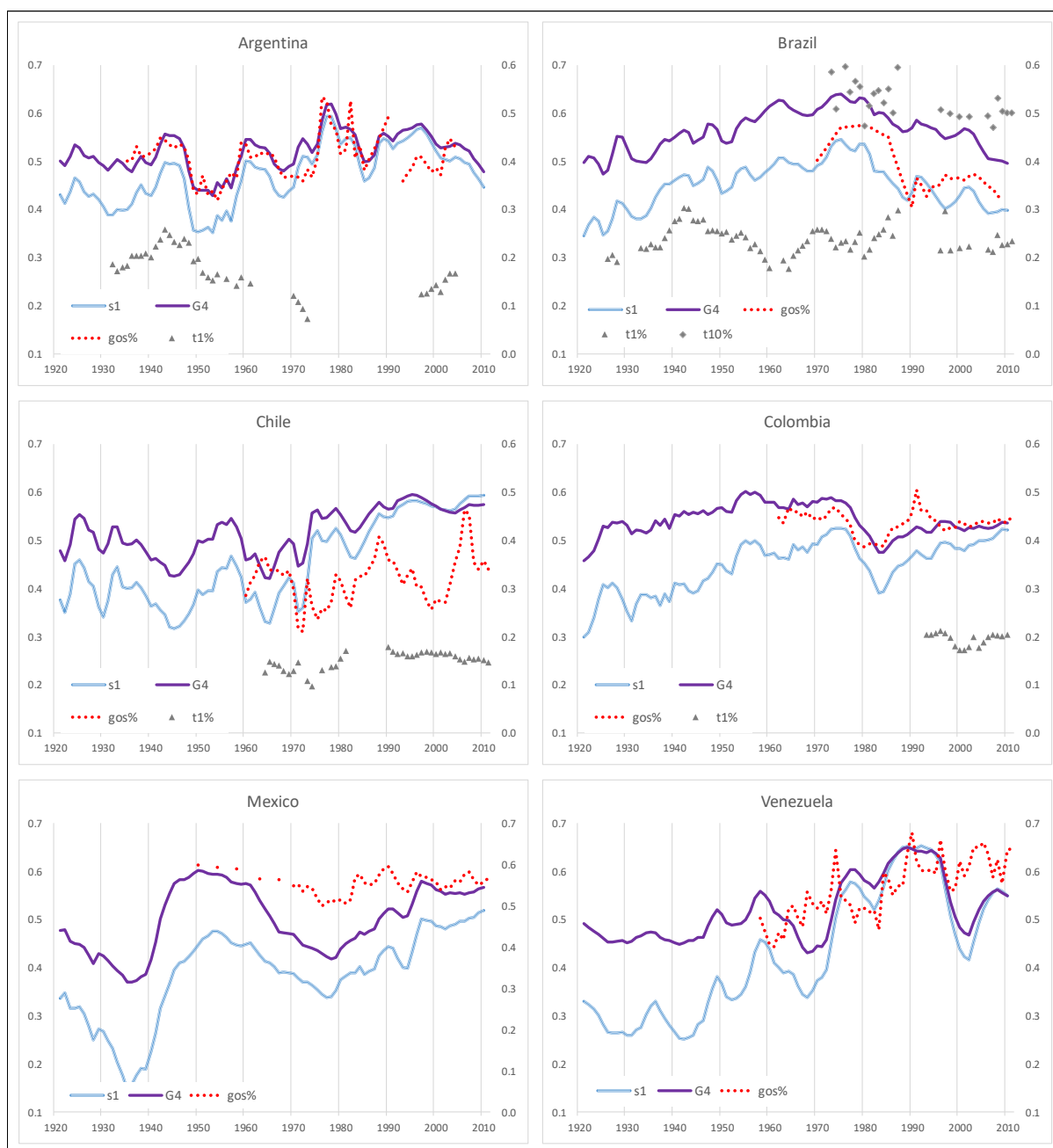
years	Group 4					Group 3					Group 2					u <sub>1</sub> /u <sub>2</sub>
	-2σ <sub>4</sub>	-1σ <sub>4</sub>	u <sub>4</sub>	+1σ <sub>4</sub>	+2σ <sub>4</sub>	-2σ <sub>3</sub>	-1σ <sub>3</sub>	u <sub>3</sub>	+1σ <sub>3</sub>	+2σ <sub>3</sub>	-2σ <sub>2</sub>	-1σ <sub>2</sub>	u <sub>2</sub>	+1σ <sub>2</sub>	+2σ <sub>2</sub>	
<i>Argentina</i>																
1920	23	28	33	38	43	40	47	54	62	69	52	64	75	86	98	16.9
1940	41	49	56	63	71	53	71	88	105	122	78	98	117	137	156	13.8
1960	45	50	56	61	67	70	84	98	113	127	106	130	153	177	200	12.2
1980	36	41	47	52	57	78	102	126	150	174	106	145	184	223	262	10.6
2000	17	32	46	61	76	42	62	83	103	123	72	115	157	199	241	6.0
<i>Brazil</i>																
1920	9	14	20	26	31	23	33	42	51	60	37	50	63	76	89	5.8
1940	10	18	26	34	42	24	32	41	49	58	38	50	63	75	88	8.3
1960	13	20	26	33	40	36	45	53	62	71	74	95	115	136	156	10.6
1980	14	28	42	57	71	46	73	100	126	153	102	135	169	202	236	9.1
2000	13	25	36	48	59	36	70	105	139	174	80	142	203	265	327	4.6
<i>Chile</i>																
1920	15	20	25	30	34	29	38	46	55	64	50	65	80	95	110	8.7
1940	17	23	30	36	42	33	46	59	72	86	44	59	73	87	101	8.7
1960	18	28	38	47	57	36	58	81	103	125	68	92	116	140	164	5.6
1980	21	29	36	43	51	62	95	127	160	192	87	119	150	182	213	8.0
2000	27	45	64	82	100	59	110	160	211	261	134	184	234	283	333	6.3
<i>Colombia</i>																
1920	6	10	14	18	22	19	27	35	44	52	24	36	48	60	72	4.9
1940	11	17	23	30	36	31	48	66	83	100	42	60	79	97	115	7.6
1960	11	17	23	30	36	36	49	62	74	87	55	76	96	116	137	6.1
1980	23	32	42	52	61	47	66	85	104	123	71	93	116	138	160	6.9
2000	24	36	48	60	71	40	60	80	100	120	75	102	130	157	184	6.0
<i>Mexico</i>																
1920	15	20	24	28	32	30	40	49	59	68	36	51	65	79	93	7.2
1940	19	26	33	40	48	46	61	75	89	104	60	89	118	146	175	4.6
1960	21	27	33	39	45	51	64	78	91	104	72	98	123	148	173	9.2
1980	62	76	89	103	116	101	129	157	185	213	145	182	219	257	294	5.0
2000	24	34	43	52	62	44	65	85	106	126	96	141	185	229	274	4.4
<i>Venezuela</i>																
1920	9	13	17	21	25	23	31	39	48	56	31	46	62	78	94	4.8
1940	16	25	35	44	54	42	63	84	106	127	62	92	123	153	183	5.5
1960	29	42	56	69	82	74	93	111	130	149	122	156	191	226	260	8.9
1980	54	69	83	97	111	83	107	131	154	178	200	248	297	346	395	6.2
2000	26	38	50	62	74	59	75	90	106	121	113	144	175	206	237	4.4

Notes: own calculations using the “68-95-99.7 rule”; u<sub>4</sub>, u<sub>3</sub>, u<sub>2</sub> are calculated as three-year average monthly wages (see OA2) in each year.

TABLE A3: PAIR CORRELATIONS BY METRICS AND EPOCHS IN THE LA6

	Arg	Bra	Chi	Col	Mex	Ven	LA6
<i>1920-2011</i>							
G4 & G3	0.35	0.44	0.49	0.38	0.67	-0.31	0.34
G4 & G4B	0.98	0.99	0.98	0.99	0.99	0.99	0.99
G3 & G3B	0.96	0.98	0.76	0.98	0.99	0.96	0.94
G3 & G3W	0.75	-0.35	-0.34	-0.41	0.08	0.49	0.04
G3B & G3W	0.52	-0.52	0.02	-0.25	-0.04	0.42	0.02
<i>1920-1979</i>							
G4 & G3	0.34	0.73	0.23	0.10	0.62	-0.25	0.30
G4 & G4B	0.99	0.99	0.99	0.99	0.99	0.99	0.99
G3 & G3B	0.94	0.99	0.78	0.94	0.99	0.98	0.94
G3 & G3W	0.07	-0.77	-0.59	0.07	0.12	0.79	-0.05
G3B & G3W	-0.27	-0.86	-0.07	0.38	-0.02	0.68	-0.03
<i>1980-2011</i>							
G4 & G3	-0.06	0.46	0.59	-0.84	0.77	0.27	0.20
G4 & G4B	0.99	0.99	0.99	0.99	0.99	0.99	0.99
G3 & G3B	0.99	0.98	0.76	0.98	0.99	0.98	0.95
G3 & G3W	0.72	-0.32	0.45	-0.11	0.68	-0.67	0.12
G3B & G3W	0.62	-0.49	0.56	-0.01	0.62	-0.63	0.11

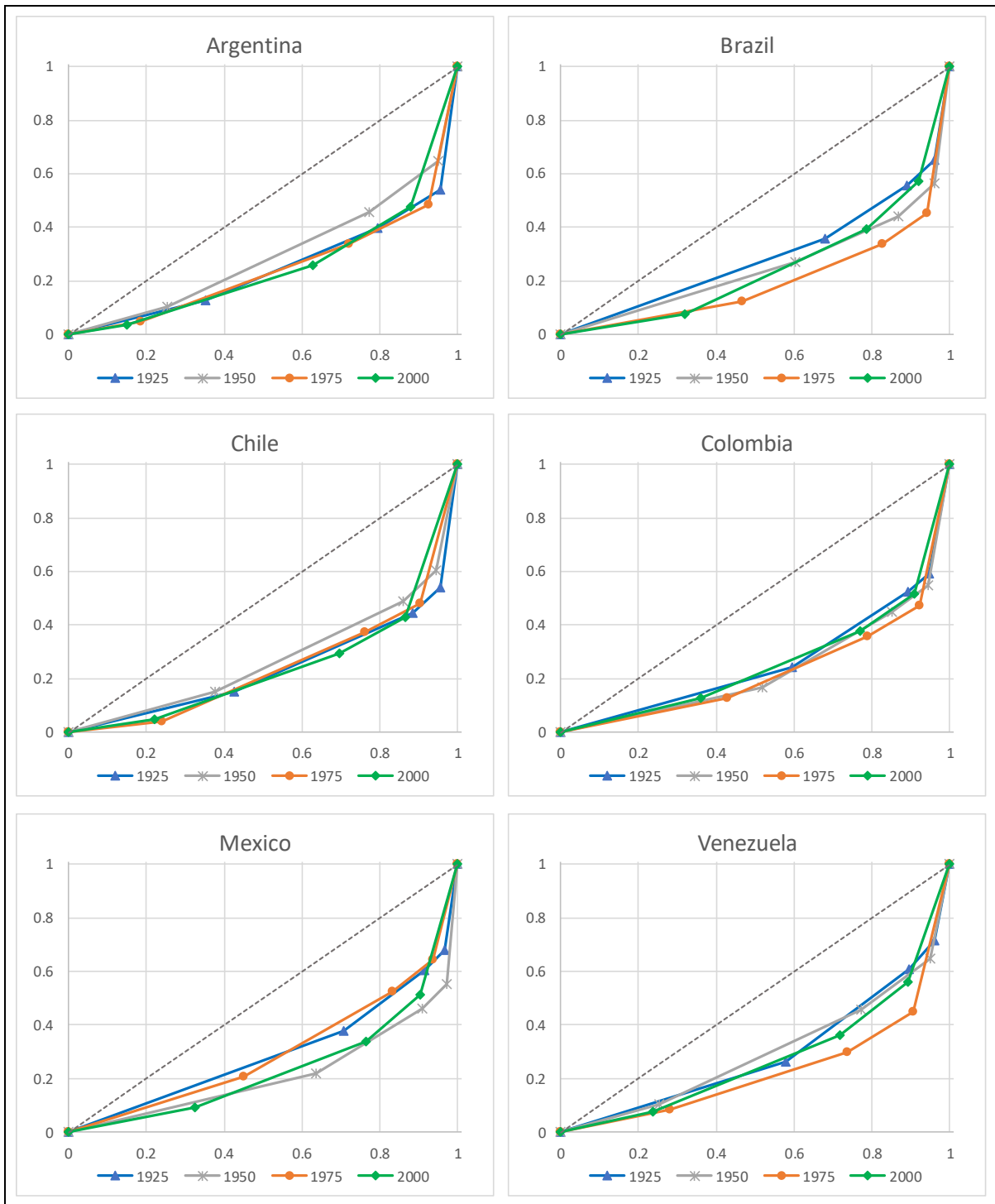
FIGURE A1: INCOME SHARES OF GROUP 1 ( $s_1$ ), GOS AND TOP1%



*Notes:*  $s_1$  are three-years moving averages. GOS stands for Gross Operating Surplus, gos% = GOS as share of Gross National Income unless otherwise indicated; t1% and t10% stand for the income share of the top 1% and top 10%, plotted on the right axes. *Sources:* gos% in Brazil, Chile, Colombia, Mexico from ECLAC; Venezuela from BCV (1992). In Argentina, gos% is calculated as the complement of the labor income share from: 1935-62 BCRA (1976); 1963-74 Frankema (2010) using GDP; 1975-90 Beccaria (1991) using GDP; 1994-2004 from Lindenboim et al. (2005). Argentina t1% (Alvaredo 2010); Chile t1% (Flores et al. 2019); Brazil t1% & t10% (Souza 2018).

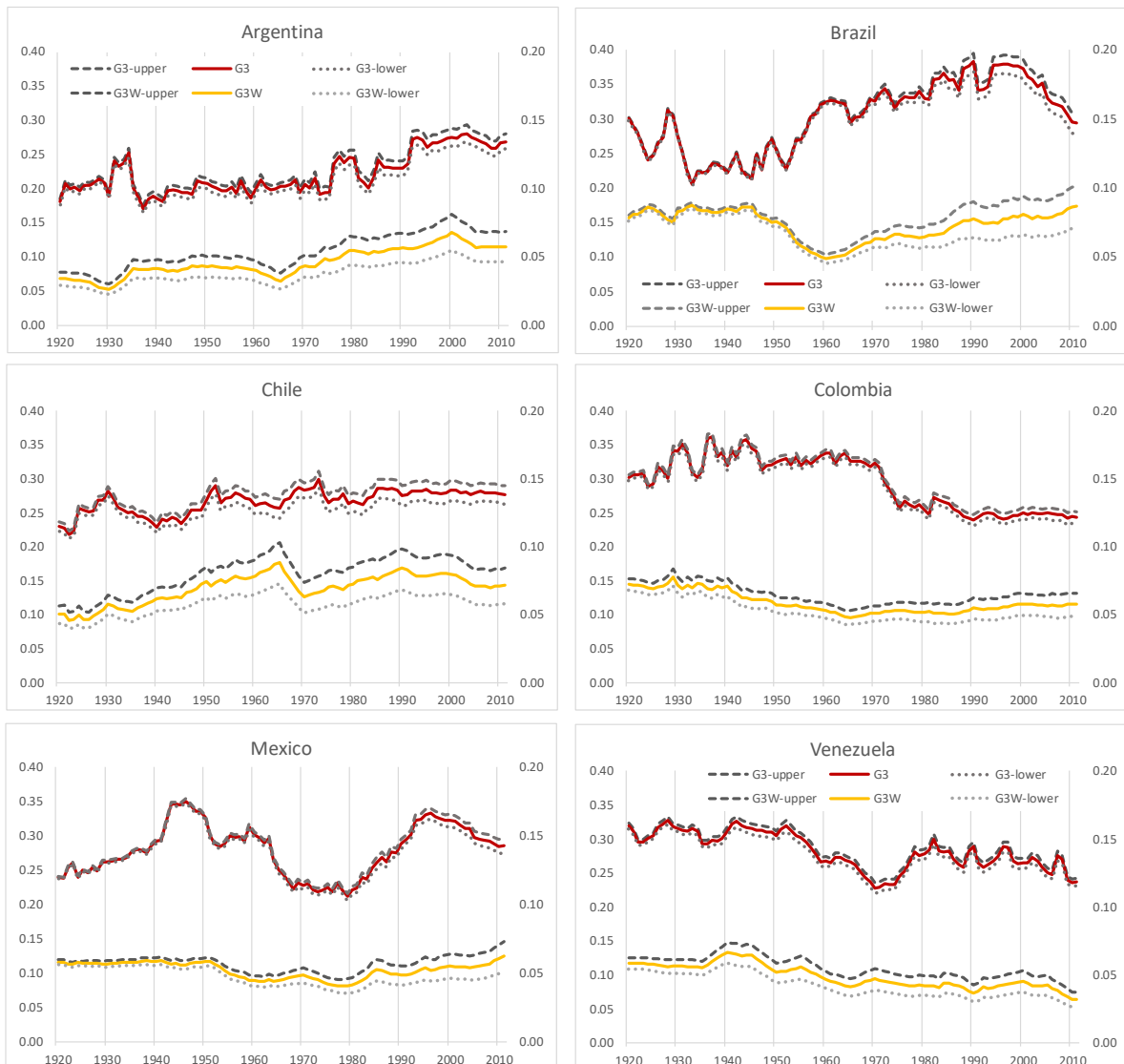


FIGURE A2: LORENZ CURVES OF  $G4B$  IN SELECTED YEARS



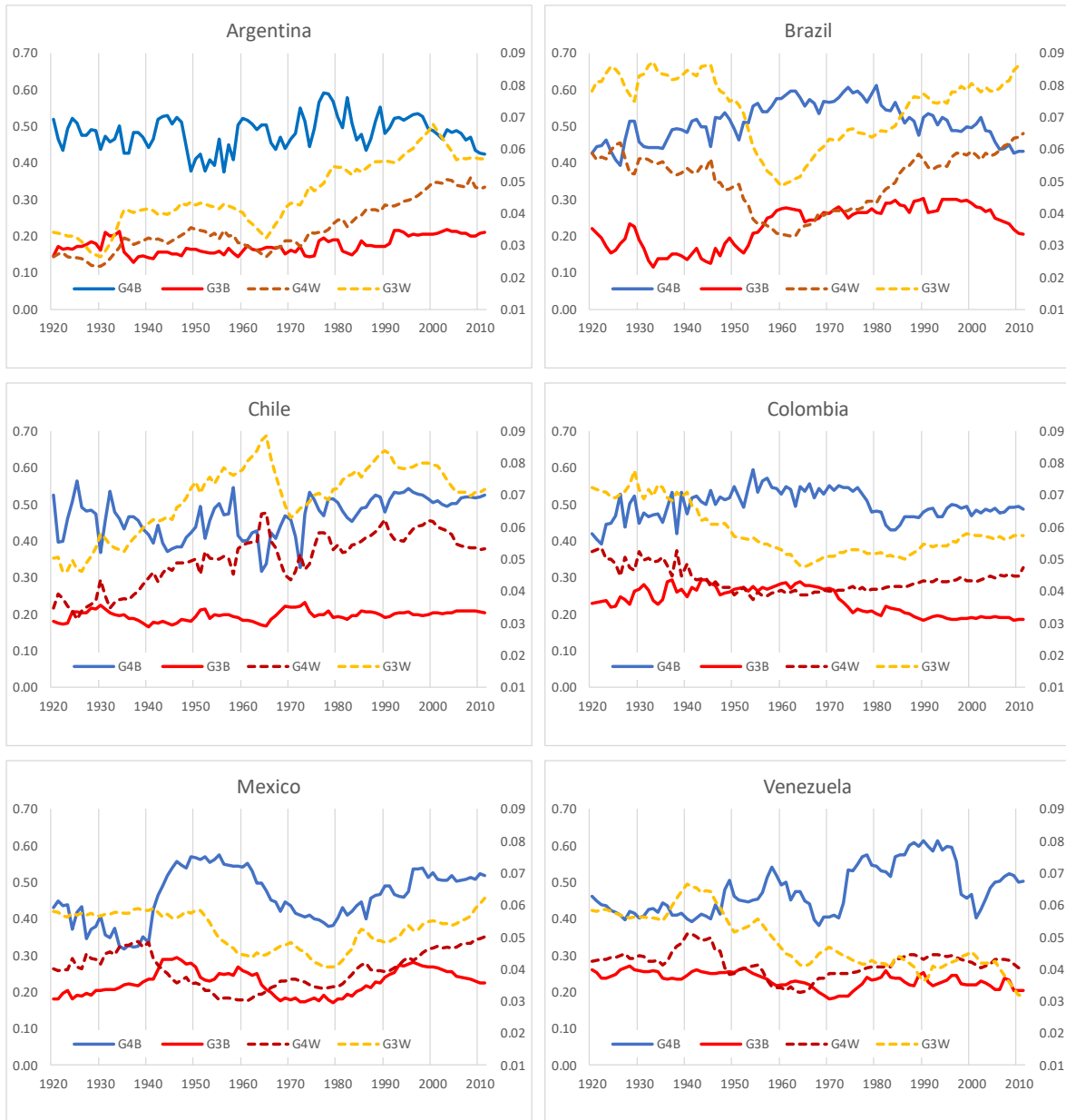
Notes: vertical axes show cumulative income shares (s) of the four groups; horizontal axes show cumulative economically active population (e).

FIGURE A3: ROBUSTNESS CHECKS ON THE IMPACT OF CHANGES IN INCOME OVERLAP BETWEEN THE LOWER THREE GROUPS ON  $G3$  AND  $G3W$



Notes: “upper” and “lower” stand for upper and lower bound respectively.  $G3W$ ,  $G3W$ -upper and  $G3W$ -lower are plotted on the right axes.

FIGURE A4: BETWEEN- AND WITHIN-GROUP OCCUPATIONAL GINIS BY COUNTRY



Notes: G4W and G3W are plotted on the right axes.

## SUPPLEMENTARY MATERIALS

For access to the three Online Appendices and the Inequality Dataset before the publication in the *Journal of Economic History* (2024) 84(4), please visit: <https://www.researchgate.net/profile/Pablo-Astorga-2/research>

## REFERENCES

- Allen, Robert C. “Class Structure and Inequality during the Industrial Revolution: Lessons from England’s Social Tables, 1688–1867.” *Economic History Review* 72, no. 1 (2019): 88–125.
- Alvaredo, Facundo. “A Note on the Relationship between Top Income Shares and the Gini Coefficient.” *Economics Letters* 110, no.3 (2011): 274–77.
- \_\_\_\_\_. “The Rich in Argentina over the Twentieth Century 1932-2004.” In *Top Incomes vol. II: A Global Perspective*, edited by Antony B. Atkinson and Thomas Piketty, chapter 6, Oxford University Press, 2010.
- Alvaredo, Facundo, and Juliana Londoño Vélez. “High Income and Personal Taxation in a Developing Economy: Colombia 1993-2010.” Commitment to Equity Working Paper 12, May 2013.
- Amarante, V, M. Abeles, and D. Vega. “Participación del Ingreso Laboral en el Ingreso Total en América Latina, 1990-2010.” *Revista de la CEPAL* 114, December (2014): 31–52.
- Amarante, V, and M. Colacce. “¿Más o Menos Desiguales? Una Revisión sobre la Desigualdad de los Ingresos a Nivel Global, Nacional, y Regional.” *Revista de la CEPAL* 124, April (2018): 7–34.
- Arroyo Abad, Leticia, and Pablo Astorga. “Latin American Earnings Inequality in the Long Run.” *Cliometrica* 11, no.3 (2017): 289–95.
- Arroyo Abad, Leticia, and Peter H. Lindert. “Fiscal Redistribution in Latin America since the Nineteenth Century.” In *Has Latin American Inequality Changed Direction? Looking over the Long Run* edited by Luis Bértola and Jeffrey G. Williamson, 243–82, Springer, 2017.
- Astorga, Pablo. “Income Shares south of the Rio Bravo, 1920-2011.” *Revista de Historia Económica de América Latina* 1, no.1. (2024): 9-41.
- \_\_\_\_\_. “A Revised Dataset of Real Wages in Latin America, 1920-2011.” *Journal of Iberian and Latin American Econ. History* 35, no.3 (2023): 553-564.
- \_\_\_\_\_. “Real Wages and Skill Premiums in Latin America, 1900-2011.” *Journal of Iberian and Latin American Econ. History* 35, no.3 (2017a): 319–53.
- \_\_\_\_\_. “Functional inequality in Latin America: News from the Twentieth Century.” In *Has Latin American Inequality Changed Direction? Looking over the Long Run* edited by Luis Bértola and Jeffrey G. Williamson, 17–41, Springer, 2017b.
- Astorga, Pablo, Ame R. Bergés, and E.V.K. Fitzgerald. “The Standard of Living in Latin America during the Twentieth Century.” *The Economic History Review* 59, no.1 (2005): 765–96.
- Atkinson, Antony B. *Inequality: What Can Be Done?* Cambridge: Harvard University Press, 2015.
- Azevedo, J.P., G. Inchauste, and V. Sanfelice. “Decomposing the Recent Inequality Decline in Latin America.” PRWP 6715, World Bank: Washington DC, 2013.

- Bacha, Edmar L., and Lance Taylor. "Brazilian Income Distribution in the 1960s: Facts, Model Results and the Controversy." *Journal of Development Studies* 14, April (1978): 271–97.
- Banco Central de Venezuela (BCV). *Series Estadísticas de Venezuela de los Últimos Cincuenta Años*. Caracas: BCV, 1992.
- Banco Central de la República Argentina (BCRA). *Series Históricas de Cuentas Nacionales de la Argentina*, vol.3. Buenos Aires: BCRA, 1976.
- Baptista, Asdrúbal. *Bases Cuantitativas de la Economía Venezolana, 1830–1995*, Caracas: Fundación Polar, 1997.
- Beccaria, Luis. "Distribución del Ingreso en la Argentina: Explorando lo Sucedió desde Mediados de los Setenta." *Desarrollo económico* 31, no.123 (1991): 319–58.
- Berg, E.J. "Wages and Employment in Less Developed Countries." Center for Research on Economic Development. Discussion Paper 13, University of Michigan, 1970.
- Bértola, Luis. "A 50 Años de la Curva de Kuznets: Crecimiento y Distribución del Ingreso en Uruguay y otras Economías de Nuevo Asentamiento desde 1870." *Investigaciones en Historia Económica* 1, no.3 (2005): 135–76.
- Camargo, J.M. "Minimum wage in Brazil. Theory and Empirical Evidence." Texto para Discussao, 67, Departamento de Economia, PUC/RJ, 1984.
- Camou, María, and Silvana Maubrigades. "The Lingering Face of Gender Inequality in Latin America." In *Has Latin American Inequality Changed Direction? Looking over the Long Run* edited by Luis Bértola and Jeffrey G. Williamson, 219–41, Springer, 2017.
- Castañeda Garza, Diego, and Erik Bengtsson. "Income Inequality in Mexico 1895-1940: Industrialization, Revolution, Institutions." *Lund Papers in Economic History* 212, Lund University, 2020.
- Centro de Estudios Distributivos, Laborales y Sociales (CEDLAS), Bases de datos. Data accessed last time: January 2018. URL: <http://cedlas.econo.unlp.edu.ar/>
- Coatsworth, John H., and Jeffrey G. Williamson. "The Roots of Latin American Protectionism: Looking before the Great Depression." NBER Working Paper 8999, June 2002.
- De Ferranti, D., G.E. Perry, F. Ferreira F, and M. Walton. *Inequality in Latin America: Breaking with History?* Washington DC: World Bank, 2004.
- De la Torre, A., J. Messina, and S. Pienknagura. *The Labor Market Story Behind Latin America's Transformation*. World Bank Studies 11884, Washington DC: World Bank, 2012.
- Departamento Administrativo Nacional de Estadística (DANE). DANE website.
- Dirección General de Estadística (DGE). *Cuarto Censo Industrial de los Estados Unidos Mexicanos 1945: Resumen General*, 1953.
- Economic Commission for Latin America and the Caribbean (ECLAC). CEPALSTAT. Data accessed: Jan. 2020.
- \_\_\_\_\_. *Social Panorama in América Latina*. Santiago de Chile: ECLAC, 2000.
- Engerman, Stanley, and Kenneth Sokoloff. "Institutions, Factor Endowments, and Paths of Development in the New World." *Journal of Economic Perspectives* 14, no.3 (2000): 217–32.

- Felix, David. "Income Inequality in Mexico." *Current History* 72, no. 425 (1977): 111–14.
- FitzGerald, E.V.K. "Economic Development and Fluctuations in Earnings Inequality in the Very Long Run: The Evidence from Latin America 1900-2000." *J. of International Develop.* 20, (2008): 1028–48.
- Flores, I, C. Sanhueza, J. Atria, R. Mayer. "Top Incomes in Chile: A Historical Perspective on Income Inequality, 1964-2017." *Review of Income and Wealth* 66, no.4 (2019): 850–74.
- Frankema, E.H.P. "Industrial Wage Inequality in Latin America in Global Perspective, 1900–2000." *Stud. Comp. Int. Dev.* 47, (2012): 47–74.
- \_\_\_\_\_. "Reconstructing Labor Income Shares in Argentina, Brazil and Mexico 1870-2000." *Journal of Iberian and Latin American Economic History* 28, no.2, (2010): 343–74.
- \_\_\_\_\_. *Has Latin America Always Been Unequal?: A Comparative Study of Asset and Income Inequality in the Long Twentieth Century*. Boston: Brill, 2009.
- Gazeley, I, R. Holmes, C. Lanata Briones, A.T. Newell, K. Reynolds, and H. Rufrancos. "Latin American Household Budget Surveys 1913-1970 and What They Tell Us about Economic Inequality among Households." IZA DP 11430, 2018.
- Gerchunoff, Pablo. *El Eslabón Perdido. La Economía Política de los Gobiernos Radicales (1916-1930)*, Buenos Aires: Edhasa, 2016.
- Gómez León, María. "The Kuznets Curve in Brazil, 1850-2010." *Journal of Iberian and Latin American Economic History* 39, no.1 (2021): 37–61.
- Goñi, E., J.H. López, and L. Serven. "Fiscal Redistribution and Income Inequality in Latin America." *World Development* 39, no.9 (2011): 1558–69.
- Instituto Brasileiro de Geografia e Estatística (IBGE), *Pesquisa Nacional por Amostra de Domicílios*.
- International Labor Organization (ILO). *International Labor Review*. Geneva: ILO, 1936–2010.
- \_\_\_\_\_. *Yearbook of Labor Statistics*. Geneva: ILO, 1964–1982.
- Jiménez, J.P., J.C. Gómez Sabaini, and A. Podestá. "Tributación, Evasión y Equidad en América Latina y el Caribe." In *Evasión y Equidad en América Latina*, edited by J.P. Jiménez, J.C. Gómez Sabaini, and A. Podestá, 11–67, Santiago de Chile: CEPAL, 2010.
- Kuznets, Simon. "Economic Growth and Income Inequality." *American Economic Review* 45, no.1 (1955): 1–28.
- Lambert P.J., and J.R. Aronson. "Inequality Decomposition and the Gini Coefficient Revisited." *The Economic Journal* 103, no.420 (1993): 1221–27.
- Langoni, Carlos G. *Distribuição da Renda e Desenvolvimento Econômico do Brasil*. Rio de Janeiro: Editora Expressão e Cultura, 1973.
- Lewis, W. Arthur. "Economic Development with Unlimited Supply of Labor." *The Manchester School of Economic and Social* 22, no.2 (1954): 139–91.
- Lindenboim, J, J.M. Graña, and D. Kennedy. "Distribución Funcional del Ingreso en Argentina. Ayer y Hoy." Documentos de trabajo CEPED, 4, June 2005.

Lindert, Peter H., and Jeffrey G. Williamson. *Unequal Gains: American Growth and Inequality since 1700*. Princeton, NJ: Princeton University Press, 2016.

Londoño, Juan L. “Brechas Sociales en Colombia.” *Revista de la CEPAL* 61, April (1997): 19–38.

\_\_\_\_\_. *Distribución del Ingreso y Desarrollo Económico: Colombia en el Siglo XX*, Santafé de Bogotá: Tercer Mundo Editores, 1995.

López, R., E. Figueroa, and P. Gutiérrez. “La ‘Parte del León’: Nuevas Estimaciones de la Participación de los Súper Ricos en el Ingreso de Chile.” Documentos de trabajo, Departamento de Economía, Universidad de Chile, 2013.

Medeiros, M, P.H.G.F. Souza, and F.A. Castro. “The Stability of Income Inequality in Brazil, 2006–2012: An Estimate Using Income Tax Data and Household Surveys.” *Ciência & Saúde Coletiva* 20, no.4 (2015): 971–86.

Milanovic, Branko, Peter H. Lindert, and Jeffrey G. Williamson. “Pre-Industrial Inequality.” *The Economic Journal* 121, no.551 (2010): 255–72.

Modalsli, Jorgen. “Inequality in the Very Long Run: Inferring Inequality from Data on Social Groups.” *J. Econ Inequal* 13, (2015): 225–247.

Morgan Marc, and P.H.G.F. Souza. “Distributing Growth during Late-Development: New Evidence on Long-Run Inequality in Brazil.” Paper presented at CLADHE IV, Santiago de Chile, July 2019.

Morley, Samuel. *La Distribución del Ingreso en América Latina y el Caribe*. Fondo de Cultura Editorial /CEPAL, 2000.

Montevideo-Oxford Latin American Economic History Database, MOxLAD.  
<http://www.lac.ox.ac.uk/moxlad-database>

Ocampo, José A. *The History and Challenges of Latin American Development*. Santiago de Chile: ECLAC, 2013

Ocampo, José A., and Camilo Tovar. “Colombia in the Classic Era of ‘Inward-Looking Development’, 1930-1974.” In *Industrialisation and the State in Latin America: The Black Legend and the Post War Years*, edited by Enrique Cárdenas, José A. Ocampo, and Rosemary Thorp, Macmillan, 2000.

Pen, Jan. *Income Distribution*, Allen Lane the Penguin Press, 1971.

Phillips, Peter C., and Pierre Perron. “Testing for a Unit Root in Time Series Regression.” *Biometrika* 75, no.2 (1988): 335–46.

Piketty, Thomas. *Capital in the Twenty-First Century*. Cambridge: Harvard University Press, 2014.

\_\_\_\_\_. “Theories of Persistent Inequality and Intragenerational Mobility.” In *Handbook of Income Distribution*, vol. 1, edited by Anthony B. Atkinson and Francoise Bourguignon, 429-76, Elsevier, 2000.

Prados de la Escosura, Leandro. “Inequality and Poverty in Latin America: A Long-Run Exploration.” In *The New Comparative Economic History*, edited by T.J. Hatton, K.H. O’Rourke, and A.M. Taylor, 291–315, Cambridge, M.I.T. Press, 2007.

Roberts, Kenneth. “The Politics of Inequality and Redistribution in Latin America’s Post-Adjustment Era.” UNU-WIDER Working Paper, August 2012.

- Rodríguez, Francisco. “Factor Shares and Resource Booms. Accounting for the Evolution of Venezuelan Inequality.” UNU-WIDER Working Paper 205, November 2000.
- Rodríguez Weber, Javier. “Top Incomes and the Ruling Class in Latin American History. Some Theoretical and Methodological Challenges.” *Economic History of Developing Regions*. (2023) DOI: 10.1080/20780389.2023.2188438
- \_\_\_\_\_. “Alta Desigualdad en América Latina: Desde Cuándo y Por Qué.” MPRA Paper 87619, 2018.
- \_\_\_\_\_. “Nuevas Estimaciones de Distribución del Ingreso en Colombia entre 1938 y 1988. Metodología de Estimación y Principales Resultados.” *Cuadernos de Economía* 36 no.72 (2017): 43–76.
- \_\_\_\_\_. “La Economía Política de la Desigualdad de Ingreso en Chile.” Ph.D. diss., Universidad de la República de Uruguay, 2014.
- Shipley, R.E. “On the Outside Looking In: A Social History of the Porteño Worker during the Golden Age of Argentine Development, 1914-1930.” Ph.D. diss., Rutgers University, 1977.
- Souza, P.H.G.F. “A History of Inequality: Top Incomes in Brazil, 1926-2015.” *Research in Social Stratification and Mobility* 57, (2018): 35–45.
- Stallings, Barbara, and Wilson Peres. *Growth, Employment, and Equity: The Impact of the Economic Reforms in Latin America and the Caribbean*. ECLAC and Brookings Institution Press, 2000.
- Székely, Miguel. “Pobreza y Desigualdad en México entre 1950 y 2004.” *El Trimestre Económico* 72, no.4 (2005): 913–31.
- Székely, Miguel, and Claudia Sámano. “Did Trade Openness Affect Income Distribution in Latin America? Evidence for the Years 1980–2010.” UNU-WIDER Working Paper, March 2012.
- Székely, Miguel, and Marianne Hilgert. “What’s Behind the Inequality We Measure: An Investigation Using Latin America Data.” IADB Working Paper 409, December 1999.
- Thorp, Rosemary. *Progress, Poverty and Exclusion: An Economic History of Latin America in the 20th Century*. Washington DC: Inter-American Development Bank, 1998.
- Tinbergen, Jan. *Income Distribution: Analysis and Policies*. New York: North-Holland Publishing, 1975.
- Valecillos, Héctor. *Crecimiento Económico, Mercado de Trabajo y Pobreza. La Experiencia Venezolana en el Siglo XX*. Caracas: Ediciones Quinto Patio, 2007.
- Williamson, Jeffrey G. “Five Centuries of Latin American Inequality.” *Journal of Iberian and Latin American Econ. History* 28, special issue 2 (2010): 227–52.
- World Inequality Database. Accessed on July 2018 from: <http://wid.world/>
- Yap, B.W., and C.H. Sim. “Comparisons of Various Types of Normality Tests.” *Journal of Statistical Computation and Simulation* 81, no.12 (2011): 2141–55.



## EHES Working Paper Series

### Recent EHES Working Papers

#### 2024

- EHES 249     The Returns to Education: A Meta-Study  
*Gregory Clark, Christian Alexander Abildgaard Nielsen*
- EHES 248     Matriline versus Patriline: Social Mobility in England, 1754-2023  
*Gregory Clark, Neil Cummins*
- EHES 247     The Global Sanitary Revolution in Historical Perspective  
*Daniel Gallardo-Albarrán*
- EHES 246     The 1992-93 EMS Crisis and the South: Lessons from the Franc Zone System and the 1994 CFA Franc Devaluation  
*Rodrigue Dossou-Cadja*

#### 2023

- EHES 245     Holy Cows and Spilt Milk: The Impact of Religious Conflict on Firm-Level Productivity  
*Jeanet Bentzen, Nina Boberg-Fazlic, Paul Sharp, Christian Volmar Skovsgaard, Christian Vedel*
- EHES 244     Income Share of the Top 10%, the Middle 50% and the Bottom 40% in Latin America: 1920-2011  
*Pablo Astorga*
- EHES 243     Wealth, inequality, and sex: the changes in female and male wealth and their consequences for the governance of the Russian Empire from 1700s to 1850s  
*Elena Korchmina*
- EHES 242     Not the Best Fillers in of Forms? The Danish and Norwegian Graduate Biographies and Upper Tail Knowledge  
*Nicholas Martin Ford, Kristin Ranestad, Paul Sharp*
- EHES 241     Medical Technology and Life Expectancy: Evidence from the Antitoxin Treatment of Diphtheria  
*Philipp Ager, Casper Worm Hansen, Peter Z. Lin*

All papers may be downloaded free of charge from: <http://www.ehes.org/>

The European Historical Economics Society is concerned with advancing education in European economic history through study of European economies and economic history. The society is registered with the Charity Commissioners of England and Wales number: **1052680**